

Why We Need to Fix Our Parks

National Park Service sites in Oregon have more than \$173.9 million in deferred maintenance

The Backlog Challenge

The National Park Service (NPS) is over 100 years old, and the infrastructure and facilities at the more than 400 sites it manages nationwide are aging. Add wear and tear from visitors and inconsistent annual funding, and the park service can't keep pace with needed repairs. NPS' maintenance backlog has grown to an estimated \$13.1 billion, and more than half of that is for highest-priority assets.

NPS sites in Oregon have more than \$173.9 million in deferred maintenance.

\$30M

Buildings



\$6.7M

Marina and waterfront systems

\$263K

Campgrounds



\$113.4M

Roads, parking lots, bridges, and tunnels

\$4.1M

Water and wastewater systems



\$19.4M

Other

Note: The figures have been rounded.

Sources: National Park Service, FY 2018 NPS Asset Inventory Summary Location Report; National Park Service, FY 2018 API Component Information, both as of Sept. 30, 2018

Why We Need to Act Now to Fix Our Parks

Our national parks document American history, provide opportunities for recreation, and sustain local and regional economies.

NPS Sites Also Support Local Communities

NPS estimates that in 2019, its sites in Oregon:



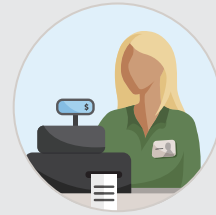
Generated **\$92 million** in visitor spending in local communities.



Attracted **1 million** visits.



Generated **\$130 million** in national economic output.



Supported **1,315 jobs**.

Source: 2019 NPS Visitor Spending Effects report, accessed June 16, 2020, <https://www.nps.gov/subjects/socialscience/vse.htm>

If all the deferred maintenance at NPS sites in Oregon was addressed, an estimated **1,156 jobs** could be created or supported.

Source: Cadmus, "Restoring Parks, Creating Jobs: How Infrastructure Restoration in the National Park System Can Create or Support Jobs," June 2019

This infographic was updated on Dec. 11, 2020, to reflect new data from the 2019 NPS Visitor Spending Effects report.

For further information, please visit:

pewtrusts.org/nationalparks

Contact: Monique O'Grady, communications manager
Email: mogrady@pewtrusts.org

Contact: Marcia Argust, project director
Email: margust@pewtrusts.org

The Pew Charitable Trusts is driven by the power of knowledge to solve today's most challenging problems. Pew applies a rigorous, analytical approach to improve public policy, inform the public, and invigorate civic life.