



# The Economic Contributions of Hunting, Fishing, and Wildlife-Watching on BLM Lands

Hunting, angling, and wildlife-watching are long-standing traditions in the United States, with public lands and waters providing some of the best places to enjoy these activities. Among these shared landscapes, the 246 million acres the Bureau of Land Management (BLM) oversees across 11 Western states and Alaska attract millions of visitors annually. In 2016, visits to these states resulted in 3.1 million hunting trips, 2.8 million fishing trips, and 2.2 million trips to view wildlife, generating more than \$1 billion in salaries and wages, supporting 26,500 jobs, and producing over \$421 million in federal, state, and local tax revenue. The total economic output, or value of all sales associated with these three types of recreational activities on BLM lands, was more than \$3 billion.

## Wyoming

Wyoming's 18.4 million acres of BLM lands saw **440,894 fishing visits**, **339,362 hunting visits**, and **129,216 wildlife-watching visits** in 2016, generating:

Nicolaus Wegner



**2,679** jobs



**\$88** million in salaries and wages



**\$331** million in sales

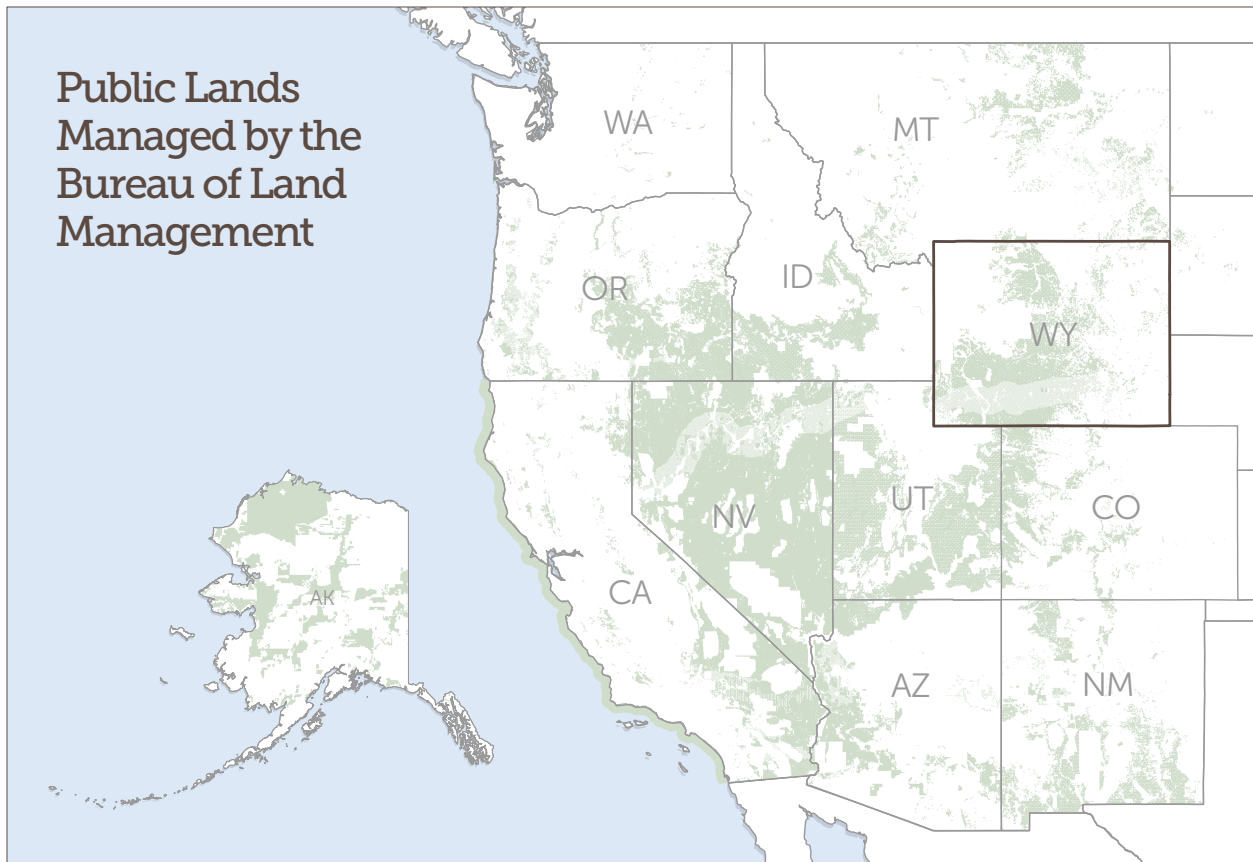


**\$24** million in state and local tax revenue



**\$24** million in federal tax revenue

## Public Lands Managed by the Bureau of Land Management



■ represents BLM land

---

### For further information, please visit:

[pewtrusts.org/wildlifejobs](http://pewtrusts.org/wildlifejobs)

---

**Contact:** Emily Diamond-Falk, officer, communications

**Email:** [ediamond-falk@pewtrusts.org](mailto:ediamond-falk@pewtrusts.org)

**Project website:** [pewtrusts.org/en/projects/us-public-lands-conservation](http://pewtrusts.org/en/projects/us-public-lands-conservation)

---

The Pew Charitable Trusts is driven by the power of knowledge to solve today's most challenging problems. Pew applies a rigorous, analytical approach to improve public policy, inform the public, and invigorate civic life.