

What is Needed Next

CDR Arthur Wendel, MD, MPH

NCEH/EEHS/HCDI

dvq6@cdc.gov

www.cdc.gov/healthyplaces

Inaugural HIA National Meeting – April 4, 2012

National Center for Environmental Health

Division of Emergency and Environmental Health Services



Healthy Community Design Initiative (HCDI):

- ❑ **Mission: To understand and improve the relationship between community design and public health through:**
 - Surveillance
 - Health impact assessment and other mechanisms to improve policies
 - Research, evaluation and best practice dissemination

Supporting Policies for HIA

□ CDC

- Winnable battles (motor vehicle injuries, NPAO)
- Transportation policy recommendations

□ HHS

- National Prevention Strategy
- Healthy People 2020
- HHS/HUD
- The Surgeon General's Vision for a Healthy and Fit Nation

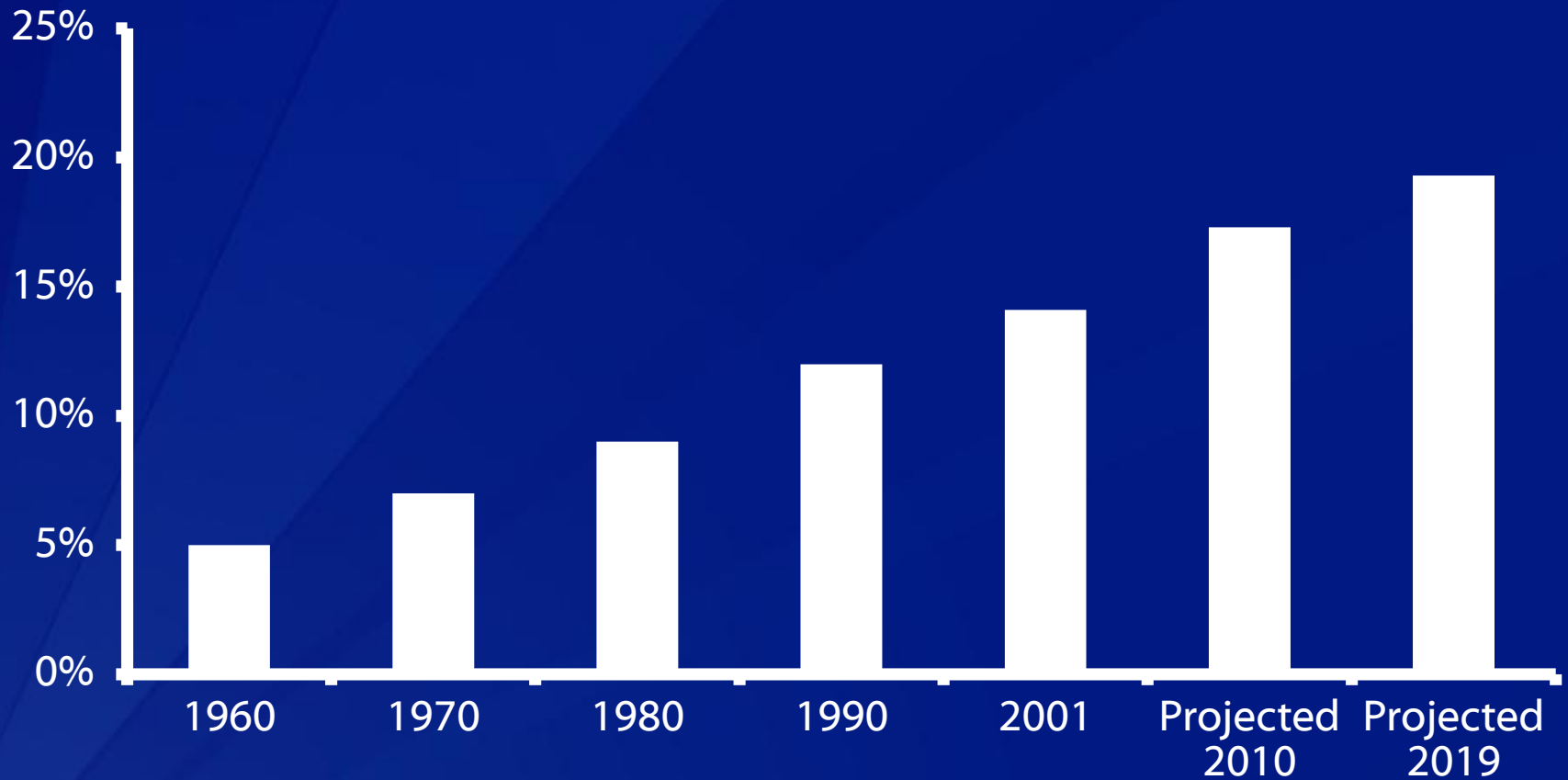
□ Other Departments

- Partnership for Sustainable Communities (EPA/HUD/DOT)
- NEPA

□ Administration

- Let's Move/Task for on Childhood Obesity
- America's Great Outdoors

Percent of U.S. GDP spent on Health Care



https://www.cms.gov/NationalHealthExpendData/25_NHE_Fact_Sheet.asp

A Vision for Health Impact Assessment

- ❑ HIA is a major part of an overall Health in All Policies movement**
- ❑ HIA practice is incorporated into selection criteria and/or EIA**
- ❑ Repositories of data exist that facilitate HIA**
- ❑ Sector-specific tools are used that promote evidence-based practice**
- ❑ Research on and for HIA is targeted to fill gaps**
- ❑ Education, training, and practice guidance supports the diversity of HIA work**

Current HIA work

- ❑ Cooperative agreement with 6 entities to train and conduct HIAs on built environment issues**
 - At least 18 HIAs per year
 - 600 professionals trained per year
- ❑ National HIA conference**
- ❑ Training and toolkit development, including on-line training module**
- ❑ Co-funded IOM report on HIA in the U.S.**
- ❑ Tracking HIAs with partners**
- ❑ Supportive efforts - surveillance, research translation**
- ❑ Connecting with the initiatives and supportive policies**

HIA in the US

Federal

CDC

HCDI

DNPAO

Others

Champions

San Francisco

Oregon

Alaska

Minnesota

Others

Professional

ASTHO

NACCHO

APA

Others

Academic

UCLA

Berkeley

GA Tech

Others

HIA in the US

Non-profit

Health Impact Project

Human Impact Partners

Conference Sponsors

Others

Federal

CDC

Others

International HIA Practice

Americas

HIA in
the US

Europe

Australasia

Others

International
organizations

Overarching Needs

- ❑ **People**
- ❑ **Resources**
- ❑ **Good Product**

What we plan to do next

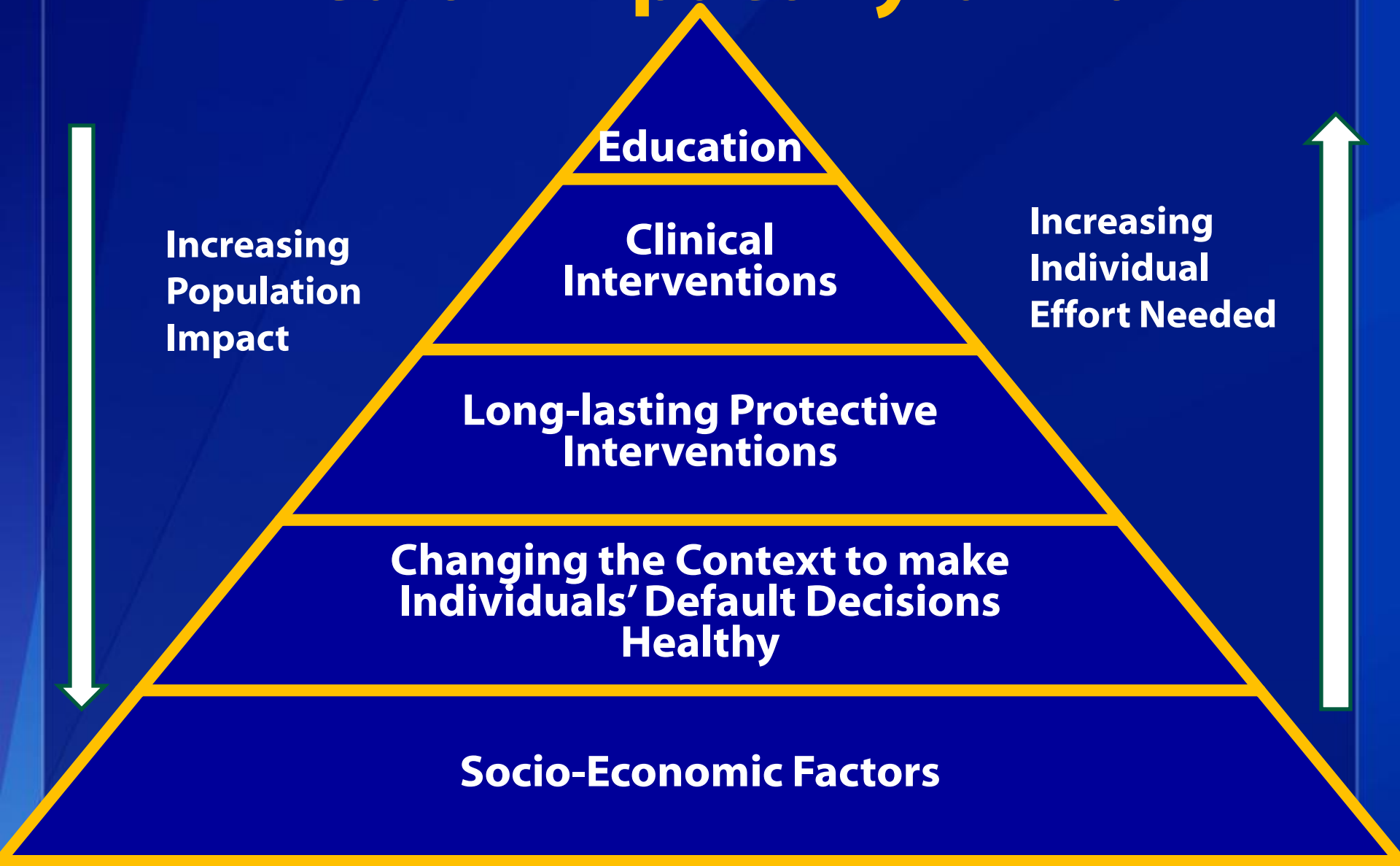
- ❑ Coordination – internal and external**
- ❑ Play our role in national strategy development**
- ❑ Work to integrate HIA in other grants and programs**

- ❑ Expand state and local HIA programs**
- ❑ Develop sector-specific tools in community design**
- ❑ Guidance for HIA practice**
- ❑ Enhance education through partners**
- ❑ Identifying and communicating best practices and successes**
- ❑ Compile data for HIA work**

What can you do?

- ❑ **Try HIA**
- ❑ **Tell people about HIA**
- ❑ **Use your power as a decision-maker**
- ❑ **Stay with the science**

Health Impact Pyramid



Thank You

CDR Arthur M. Wendel, MD, MPH
dvq6@cdc.gov

For more information please contact Centers for Disease Control and Prevention

1600 Clifton Road NE, Atlanta, GA 30333
Telephone, 1-800-CDC-INFO (232-4636)/TTY: 1-888-232-6348
E-mail: cdcinfo@cdc.gov Web: www.cdc.gov

The findings and conclusions in this report are those of the authors and do not necessarily represent the official position of the Centers for Disease Control and Prevention.

National Center for Environmental Health
Division of Emergency and Environmental Health Services

