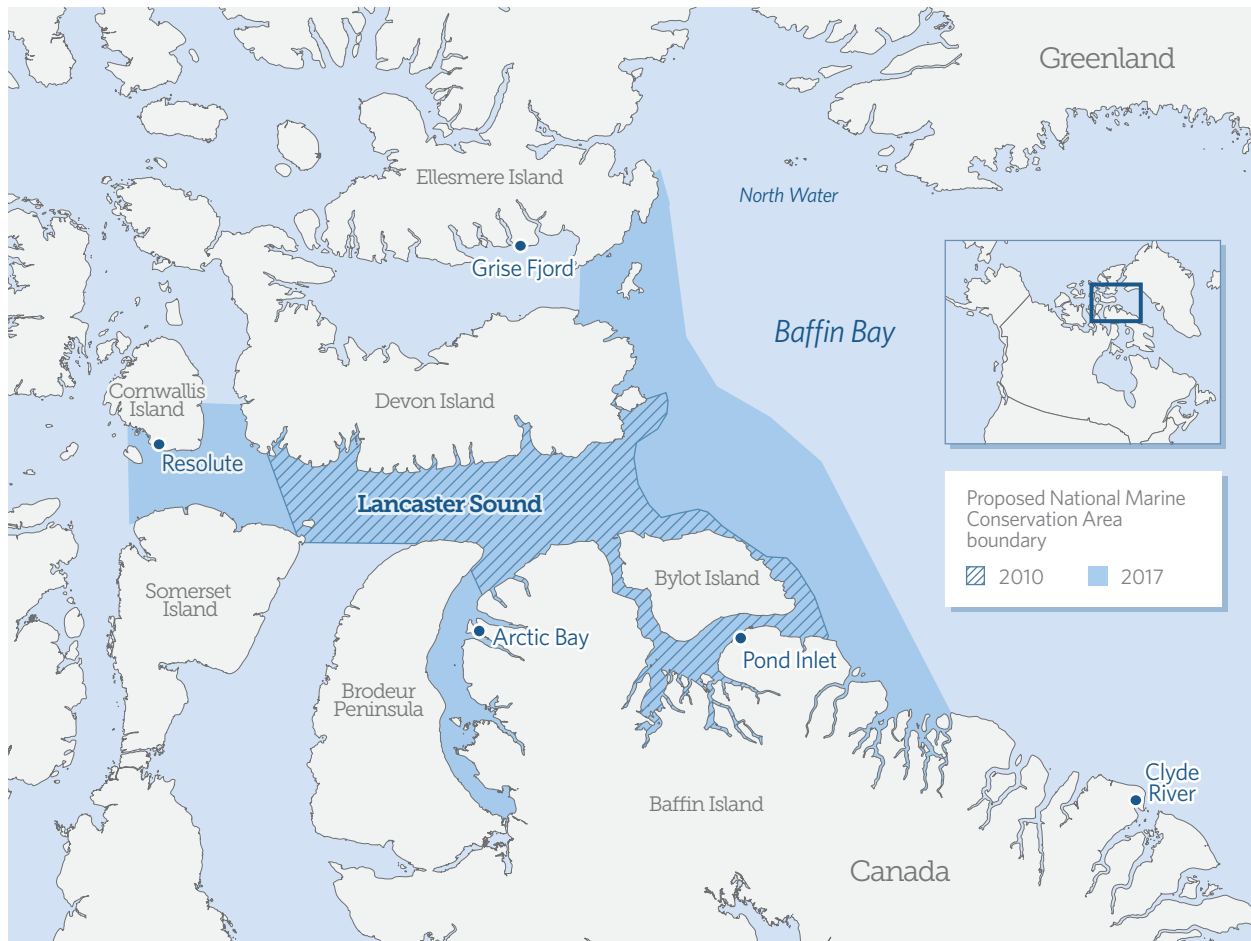


Proposed Lancaster Sound National Marine Conservation Area



Map showing newly expanded boundaries of the protected area, which would cover 131,000 square kilometers (50,000 square miles).

Note: Blue dots show locations of closest Inuit communities to the conservation area.

Source: Parks Canada, "Feasibility Assessment for the Proposed National Marine Conservation Area in Lancaster Sound," last modified Aug. 3, 2017, <http://www.pc.gc.ca/en/amnc-nmca/cnamnc-cnmca/lancaster/ne>