



Assessing the Health Impacts of the City of Portland's Rental Housing Inspections Program

Steve White, MURP
Oregon Public Health Institute
steve@orphi.org
www.orphi.org

National HIA Meeting
Washington DC
September 24, 2013

tomorrow's health today

RHIP HIA Overview

The Decision: City Council's 2012/13 budget and subsequent budget decisions

- Should the city fund the inspections program to allow for expansion of the enhanced inspections model?

Decision-makers: City Councilors and their staff; Bureau of Development Services Administrators



oregon
public
health
institute

RHIP HIA Overview

Portland's two inspections models:

Standard

Complaint driven

1 complaint = 1 unit inspected and improved

Enhanced

Complaint driven

1 complaint = ≥ 1 unit inspected and improved

More expensive



oregon
public
health
institute

RHIP HIA Assessment Questions

1. Who is primarily impacted by sub-standard housing and inspections programs?

- *Literature review; local case studies; local knowledge*



oregon
public
health
institute

Duh.

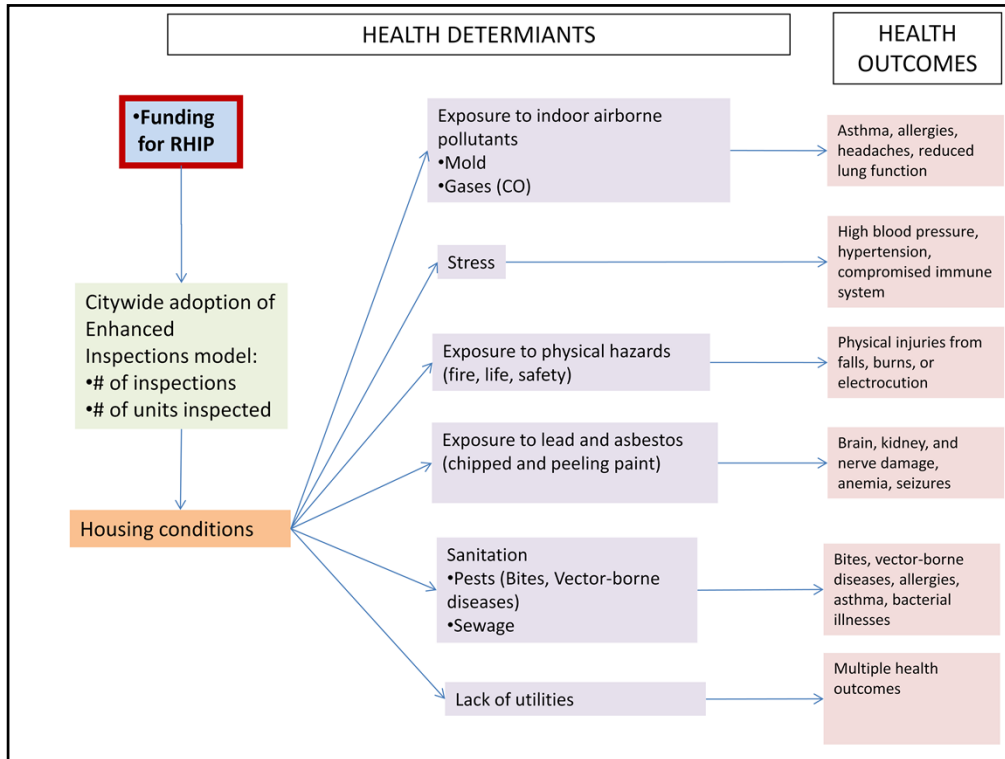
RHIP HIA Assessment Questions

2. How do housing conditions and housing inspections impact health and health equity?

- *Literature review; local case studies*



oregon
public
health
institute



RHIP HIA Assessment Questions

3. How would health and health equity be impacted by expansion or contraction of the enhanced inspections program?

- *Quantitative analysis of BDS tracking data*
- *professional judgment*



oregon
public
health
institute

RHIP HIA Findings

Table 5.5.1 Scenario comparisons by estimated violations per year and units per year

	Estimated Cases (complaints) per Year	Estimated Violations per Year	Estimated Units Inspected per Year
Status quo	1,925	4,928	2,308
Expansion		5,421	2,492
<i>Difference from Status Quo</i>		493 (10%)	184 (8%)
Elimination		3,643	1,821
<i>Difference from Status Quo</i>		-1,286 (-26%)	-487 (-21%)



RHIP HIA Findings

Table ES1: Summary of health and health equity impacts of the expansion and elimination scenarios relative to the status quo

Scenario	Direction of Impact	Magnitude of Impact (i.e., how many)	Severity of Impact (i.e., how good or bad)	Equity Impacts	Strength of Causal Evidence
Expansion	+	moderate	moderate	+	***
Elimination	-	moderate	moderate	-	***
Adopt Recommendations (Expansion + Education + Improved Tracking)	+	major	major	++	***

Explanations:



Direction of Impact refers to whether the alternative will positively impact health determinants (+), negatively impact health determinants (-), or have no impact on health determinants (~).

Magnitude of Impact reflects a qualitative judgment of the size of the population of the anticipated change in health determinant effect: minor, moderate, major.

Severity of Impact reflects the nature of the effect on health determinants and its permanence: minor, moderate, major.

Equity Impact reflects a qualitative judgment of the magnitude of the anticipated change in health inequities related to housing conditions: (--)=moderate increase in health inequities related to housing(-)= minor increase in health inequities related to housing; (~)=no change; (+)=minor improvement in health equity related to housing; (++)=moderate improvement in health equity related to housing

Strength of Causal Evidence refers to the strength of the research/evidence showing causal relationship between the alternatives and the health determinants: * = plausible but insufficient evidence; ** = likely but more evidence needed; *** = high degree of confidence in causal relationship. A causal effect means that the effect is likely to occur, irrespective of the magnitude and severity.

RHIP HIA Assessment Questions

4. What other factors influence the effectiveness of inspections programs?

- *Literature review/ Evidence-based best practices*



oregon
public
health
institute

RHIP HIA Findings

1. There are strong connections between housing, health and equity
2. The current inspections program faces challenges in meeting community needs, and
3. The enhanced inspections model holds promise for better achieving health and health equity in Portland.



oregon
public
health
institute

RHIP HIA Recommendations

inspections model to other parts of Portland

2. Tenant and property owner/manager education through the housing inspection program; and
3. A more robust system of tracking



oregon
public
health
institute

RHIP HIA Evaluation

- Restored existing funding levels
- Increased understanding of connections between housing inspections, health, and equity
- Provides useful information and recommendations for future budget discussions



oregon
public
health
institute

RHIP HIA Keys to Success

- Balanced and effective Steering Committee membership
 - Credibility with decision-makers
 - Characterization of impacts
- Strong emphasis on recommendations and dissemination
- Equity lens
- Not the numbers!



oregon
public
health
institute



THANKS!

Steve White
HIA Project Manager
steve@orphi.org
www.orphi.org



tomorrow's health today