



Scoping an HIA Project

Steve White, MURP

*Inaugural National Health Impact Assessment Meeting
Washington DC
April 3-4, 2012*

tomorrow's health today

Scoping: WHY, WHO & HOW



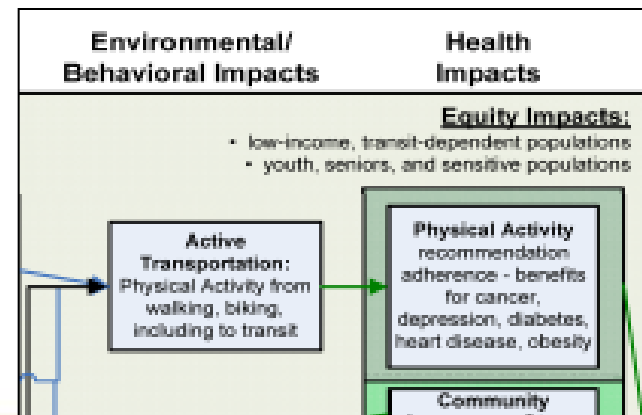
The primary purpose of scoping is to **lay the foundation for assessment** by developing a work plan that details...



Scoping: WHY, WHO & HOW



- **Why** are we doing the HIA?
- **Who** will be involved in conducting the HIA?
- **Who** will be impacted by the decision?
- **How** will the decision impact population health?
- **How** will you assess the health impacts?

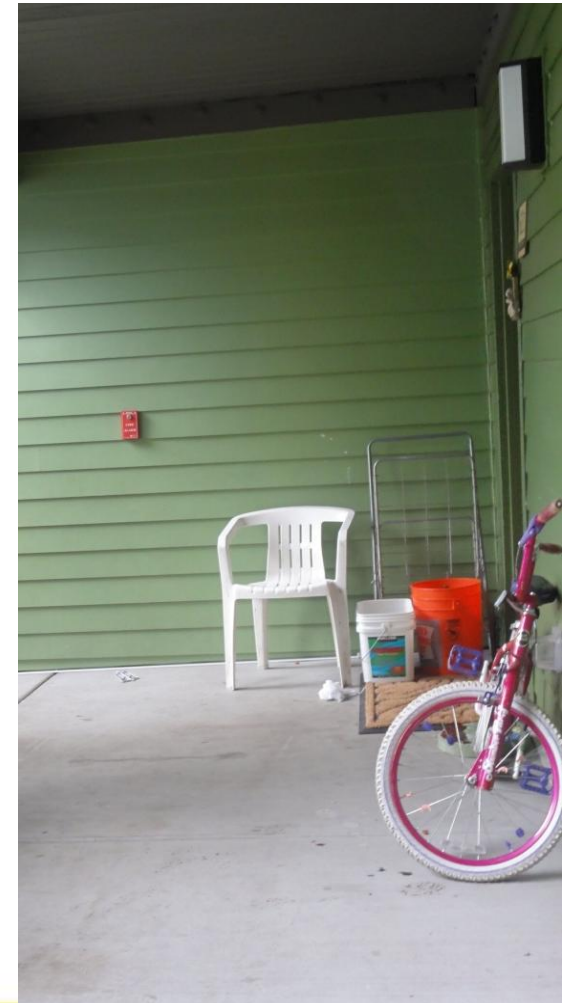


tomorrow's health today

Scoping Outcomes



1. A statement of the HIA **main goals** and **key health effects** considered.
2. A description of the **impacted population** and **key health outcomes**.
3. A brief summary and logic model of the **pathways** through which the population's health and health determinants could be affected.



Scoping Outcomes



4. A summary of **how stakeholders will be engaged**
5. A description of the **health determinants and outcomes** that will be assessed in the HIA.
6. A description of the **research questions**, data sources, and methods to be used.



tomorrow's health today

Scoping Outcomes



7. Identification of apparent **data gaps**.
8. A **timeline** of assessment activities.
9. A **work plan** of the methods you will use to collect information on health outcomes and involve stakeholders.



tomorrow's health today

Why do an HIA, sample goals



City of Portland Rental Housing Inspections Program HIA

Outcomes Goals:

1. To provide the Portland City Council and BDS directors with information about the relative health and health equity impacts of the city's standard and enhanced rental housing inspections models, so that they can more effectively consider health and health equity outcomes when determining how much funding to allocate the city's rental housing inspections program.
2. To provide the other interested stakeholders with information about the relative health and health equity impacts of the city's standard and enhanced rental housing inspections models, to help inform their engagement and advocacy on housing inspections issues.

Why do an HIA, sample goals



City of Portland Rental Housing Inspections Program HIA

Process Goals:

1. To increase understanding among project stakeholders about the connections between housing inspection, housing stock, health, and health equity.
2. To build capacity among SC members to participate in HIAs and utilize them in their work.
3. To provide stakeholders with an example of an HIA that will inform their consideration of its utility in improving the health impacts of future decisions in non-health related sectors.
4. To conduct an HIA that conforms with the “Practice Standards for Health Impact Assessment” (version 2, 2010) established by the North American Practice Standards Working Group.



WHO to Involve in HIA

1. Who should be involved?

- Impacted groups
- Decision stakeholders

2. What role can they fill?

- HIA Advisory Committee member
- HIA Team member
- Information resource
- Technical advisor

3. What expertise do you need?



WHO to Involve in HIA

Stakeholder Analysis Matrix:

Stakeholder group/key contact	Interest in HIA or related decision	Power to influence the decision (high/med/low)	How and when (what stage) to engage?	Potential role in HIA
Metro MultiFamily Housing Alliance/ Deborah Imse	Well-connected land lord group involved in on-going discussions about Inspections Program	Medium	Advisory Committee/ Recommendations	AC member
Community Alliance of Tenants/ Elisa Harrigan	Membership org. interested in improving housing conditions	Medium	AC	AC member



WHO will be Impacted?

Lake Oswego to Portland Transit Study HIA

1. What is the geographic scope of the potential impacts?
2. What are the primary socio-demographic sub-groups that live in or otherwise use the impacted area(s)?
3. Which of these sub-groups can be considered vulnerable and why?
4. What is the temporal scope (short term vs. long term) of the potential impacts?



How is Health Impacted?

1. What are the current conditions the decision will affect?
2. What are the direct, short-term and intermediate impacts of the decision?
3. What are the primary health determinants this decision will affect?
4. What are the potential long-term health outcomes related to these changes in health determinants?
5. Are there additional corollary (less direct) impacts that might produce changes in health outcomes?

HEALTH DETERMIANTS

HEALTH OUTCOMES

•Funding for RHIP

Citywide adoption of Enhanced Inspections model:
•# of inspections

Housing conditions

Neighborhood blight

Exposure to indoor airborne pollutants
•Mold
•Gases (CO)

Stress

Exposure to physical hazards (fire, life, safety)

Exposure to lead and asbestos (chipped and peeling paint)

Sanitation
•Pests (Bites, Vector-borne diseases)
•Sewage

Lack of utilities

Asthma, allergies, headaches, reduced lung function

High blood pressure, hypertension, compromised immune system

Physical injuries from falls, burns, or electrocution

Brain, kidney, and nerve damage, anemia, seizures

Bites, vector-borne diseases, allergies, asthma, bacterial illnesses

Multiple health outcomes

Scoping: How to Assess Impacts



2 basic assessment questions:

1. What are the existing conditions for each health determinant and outcome?
2. How might these conditions change as a result of the decision?

Scoping: How to Assess Impacts



Airborne Pollutants

Research Questions: Existing Conditions	Research Questions: Potential Impacts	Possible Indicators	Data Sources	Methodology	Priority
What is the rate/number of hospitalizations from airborne pollutants related to substandard housing in Portland?	To what extent would citywide expansion of the enhanced program eliminate/reduce exposure to airborne pollutants?	Hospitalization rates for asthma, allergies, and other health problems caused by exposure to airborne pollutants;	hospitalization records; BDS tracking data; tenant feedback	comparative assessment of hospitalization records and BDS tracking data; tenant surveys/interviews	
What are the most common sources of airborne pollutants related to substandard housing in Portland?	To what extent would citywide expansion of the enhanced program eliminate/reduce exposure to airborne pollutants?	% of initial inspections that lead to improvements related to injuries	Published research; local and national data (case studies, hospitalizations); BDS tracking data; tenant feedback	Literature review; comparative assessment of BDS tracking data; tenant surveys/interviews	

Resources



STEP 2: SCOPING



Objective

To create a plan and timeline for conducting an HIA that defines priority issues, research questions and methods, and participant roles.

Essential Tasks

- Determine the individual or team responsible for conducting the HIA and their roles
- Set ground rules or principles of collaboration for working together
- Establish goals for the HIA

Key Points

Be inclusive. Health impacts to be studied in the HIA should be informed by literature as well as stakeholders including community groups and residents, public health and other government agencies, project proponents, decision makers. Broad participation reduces potential bias related to interests of particular groups.

Use diverse outreach methods to solicit feedback and participation from a variety of stakeholders by hosting a public meeting, receiving public comments, interviewing stakeholders and experts, or inviting input from local health experts.

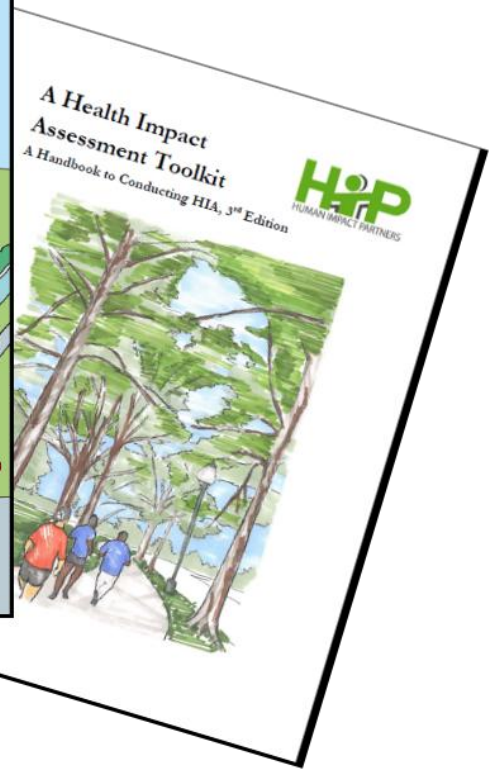
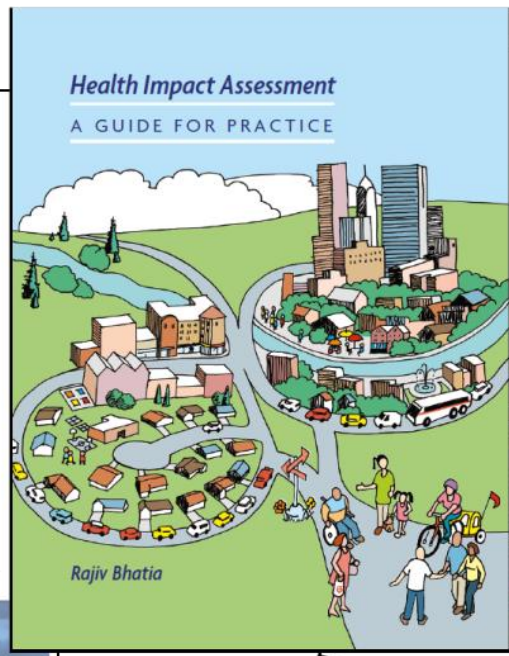
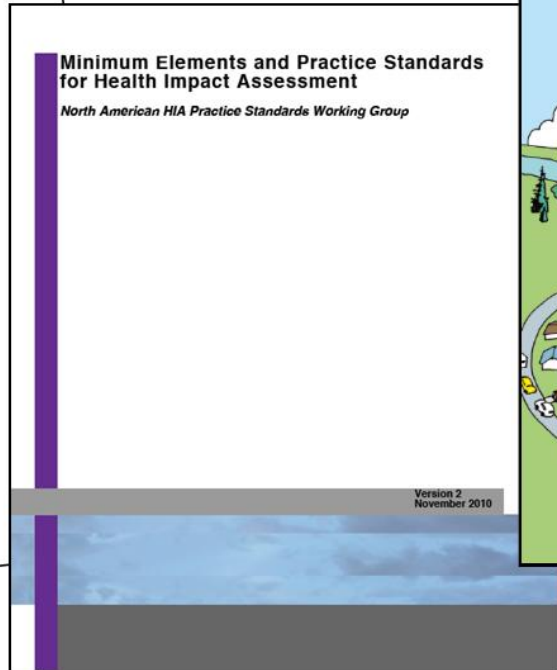
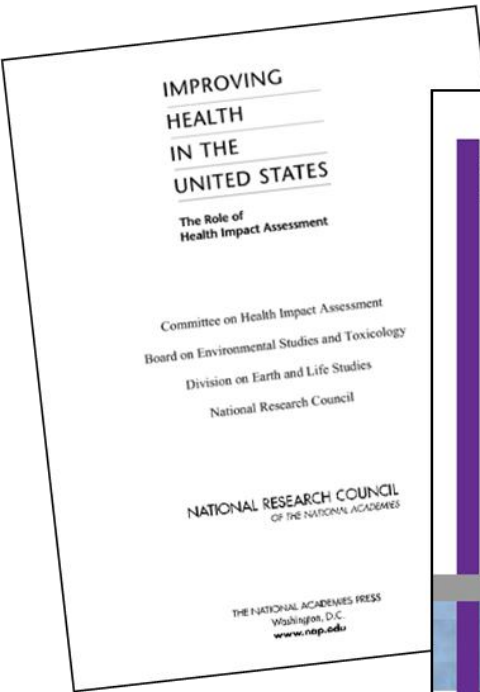
- Research questions, data sources, and analytic methods for analysis
- Timelines
- Draft plans for reporting and communications, monitoring, and evaluation
- Participant roles and responsibilities

The scope should focus on impacts with the greatest potential significance, with regard to factors including but not limited to magnitude, certainty, permanence, stakeholder priorities, and equity. Rationale for issues selected in the scope should be documented.

Resources required for HIA analysis:

tomorrow's health today

Resources





Thanks!

*Steve White, MURP
Oregon Public Health Institute*

*steve@orphi.org
(503) 227-5502*

www.orphi.org

tomorrow's health today