

HIA in the United States: Overview of current practice

National HIA Meeting
Plenary Session, Day 1:
State of Practice &
Impacts of HIA

Aaron Wernham, M.D., M.S.
Director | The Health Impact Project
p: 202.540.6346
e: awernham@pewtrusts.org
www.healthimpactproject.org

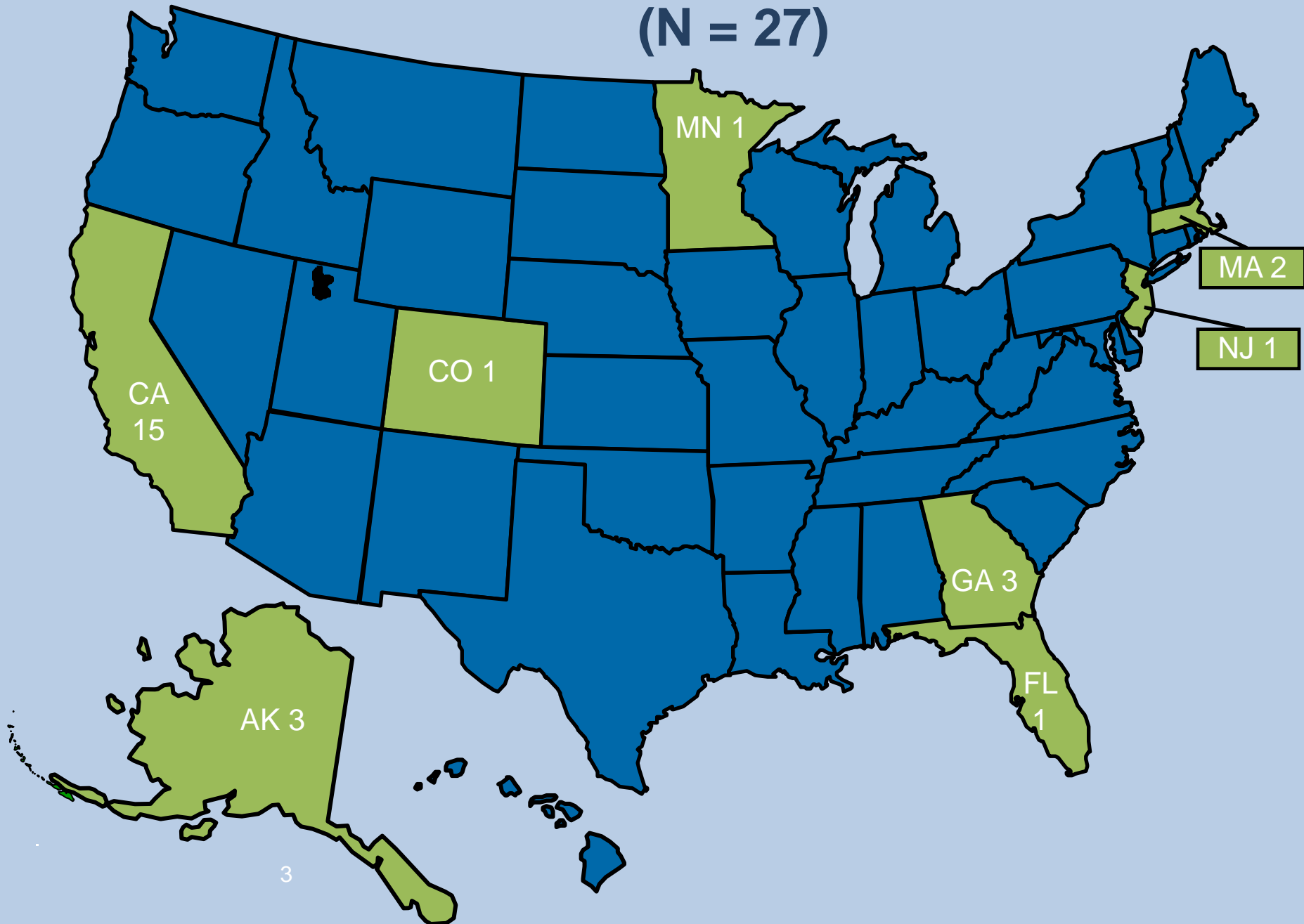
A collaboration between Robert Wood Johnson Foundation and The Pew Charitable Trusts.

A brief history of HIA in the U.S.

- 1999 (First HIA?) San Francisco DPH HIA on minimum wage
- 2001 First RWJF grant on HIA—Partnership for Prevention
- 2004 Workshop on advancing the field of HIA in the U.S
- 2005-2008
 - Many new HIAs; HIA funders
 - Human Impact Partners founded
 - Use of HIA under federal and state EIA laws
- 2009 Health Impact Project founded
- 2010 North American Practice Standards
- 2011
 - Federal recommendations and grant programs support HIA (NPC, Healthy People, Let's Move, CTG, others)
 - National Research Council guidance

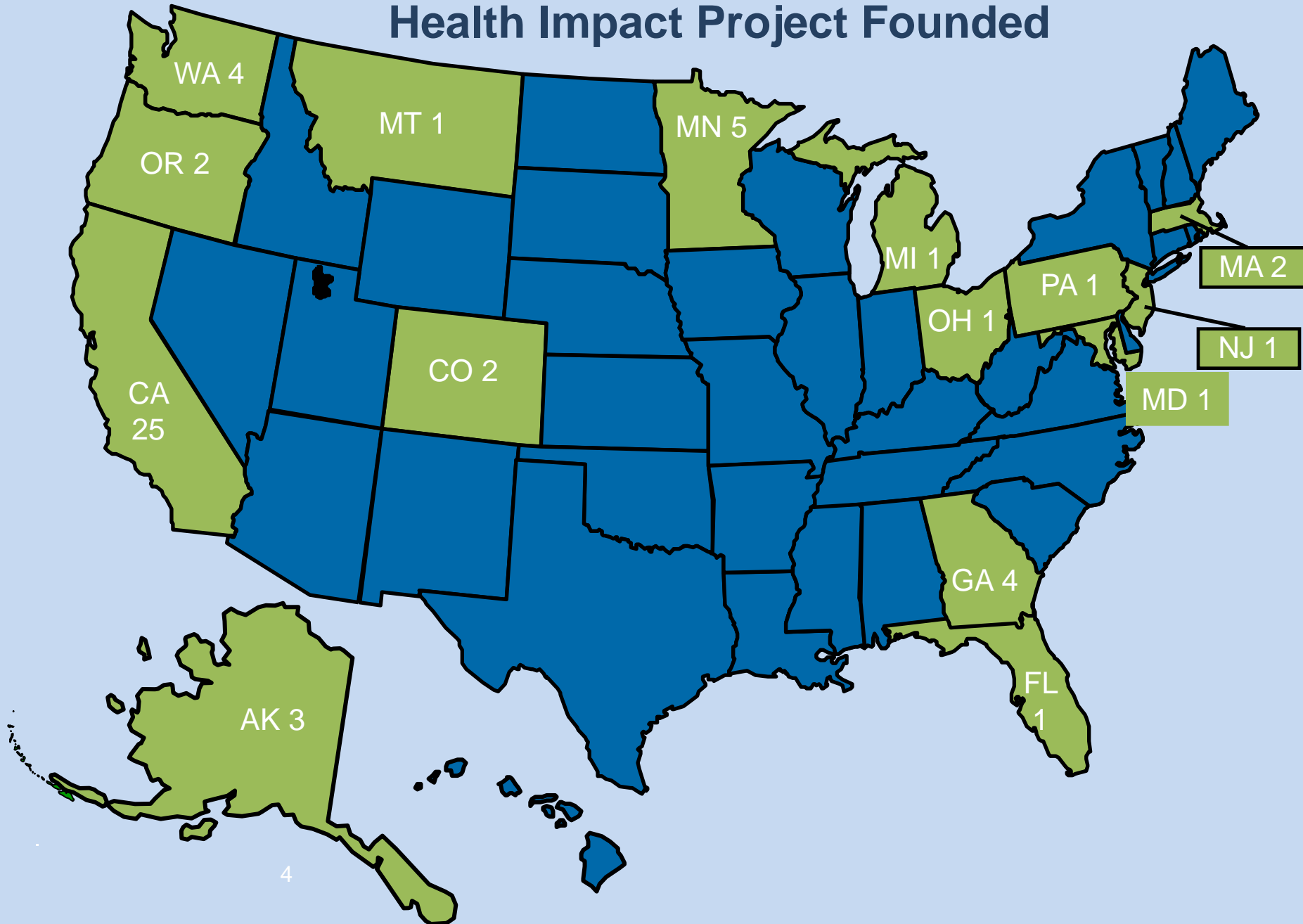
Completed HIAs 2007

(N = 27)

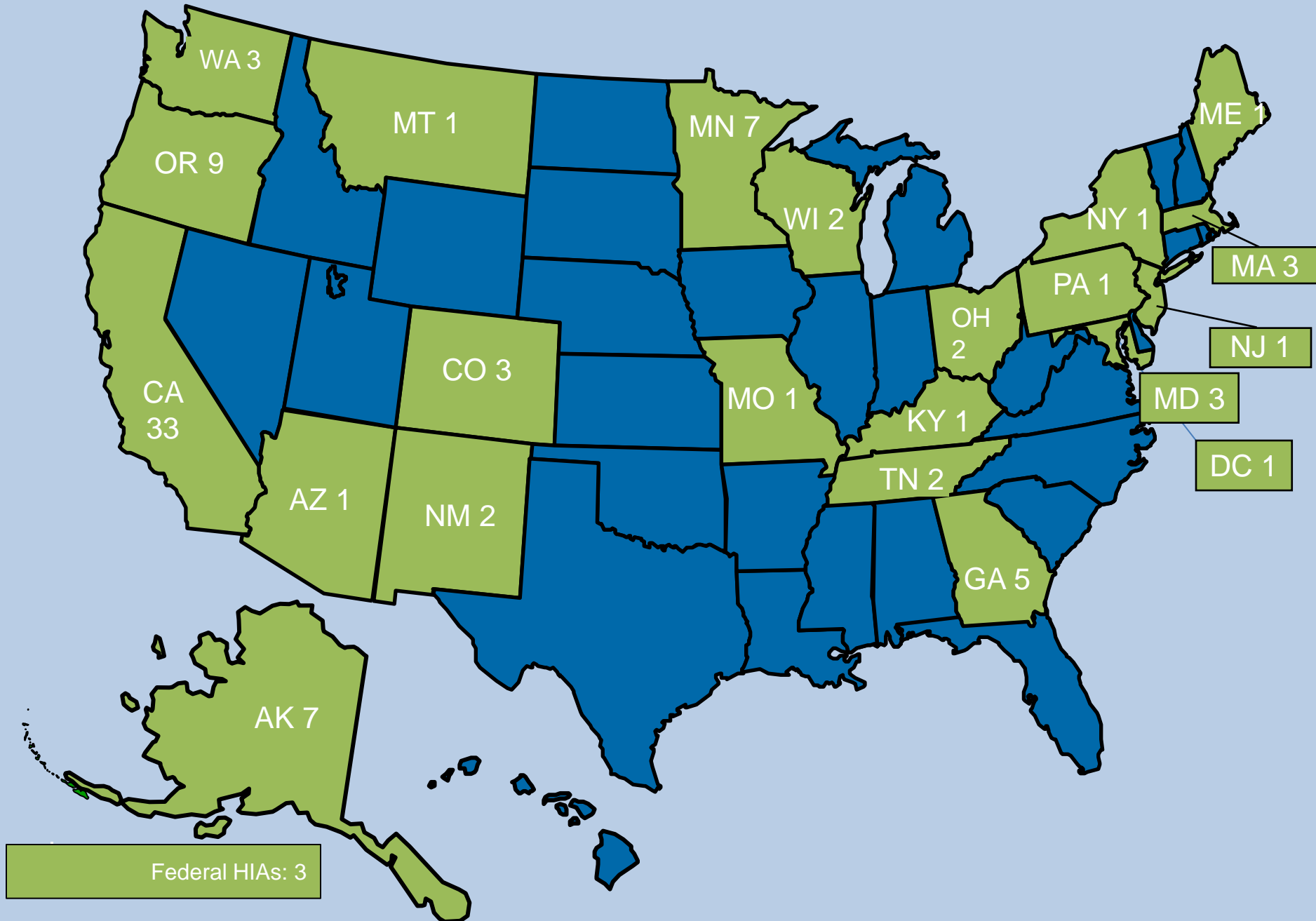


Completed HIAs 2009 (N = 54)

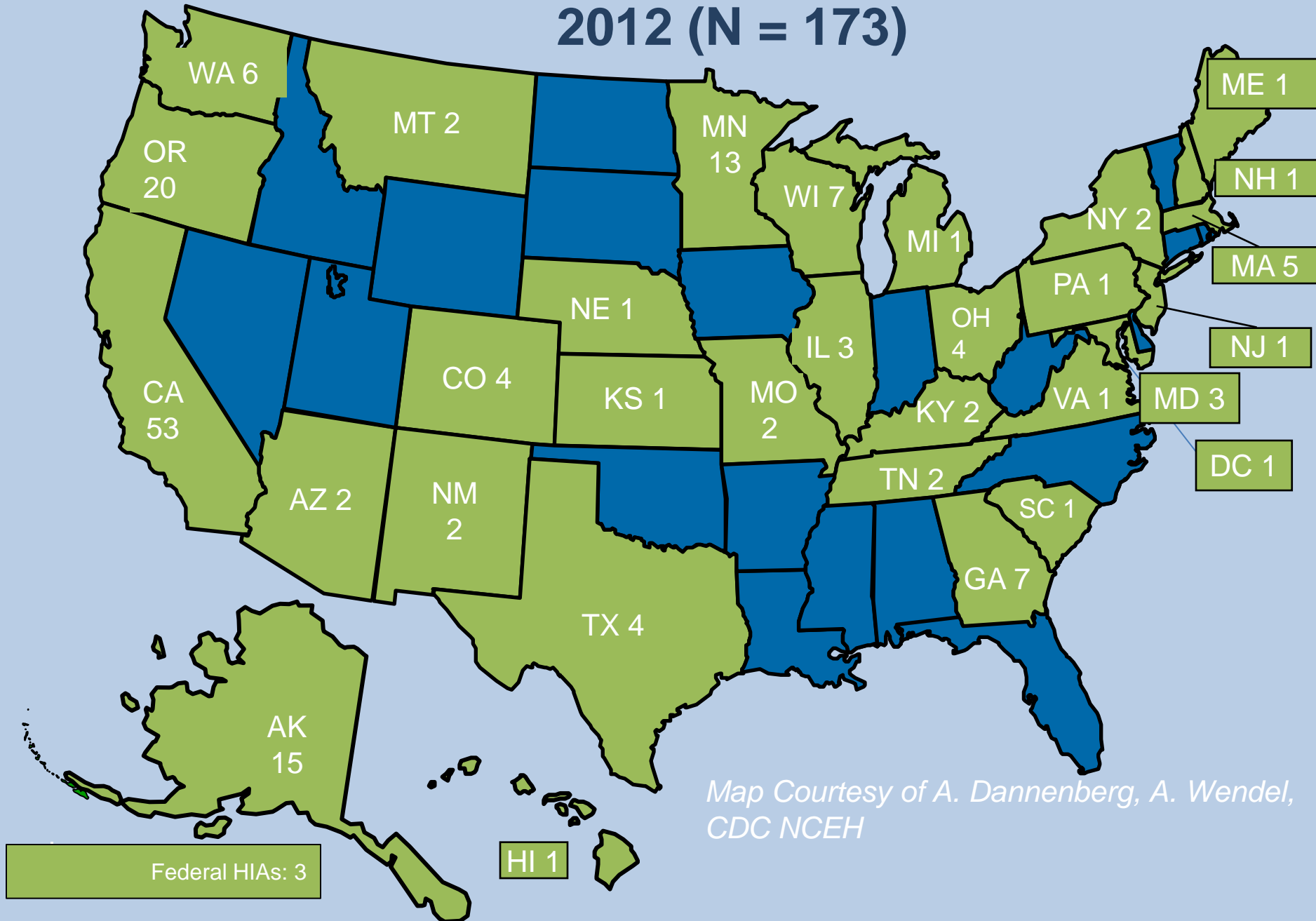
Health Impact Project Founded



Completed HIAs 2012 (N = 91)

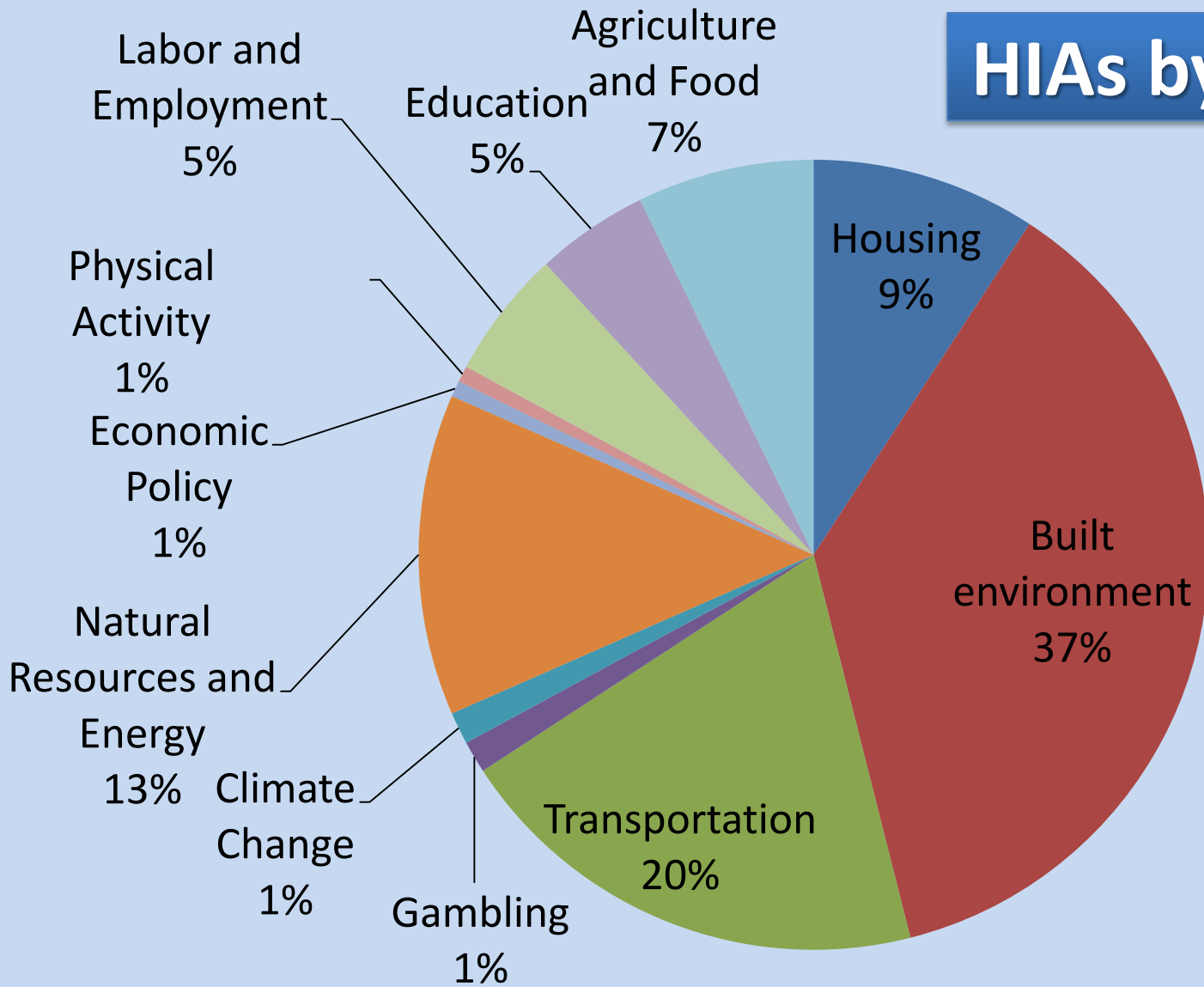


Completed HIA and In Progress HIAs 2012 (N = 173)



Map Courtesy of A. Dannenberg, A. Wendel,
CDC NCEH

HIAs by Sector



Recent Developments in the Field

Federal Emphasis on Cross-sector Approach

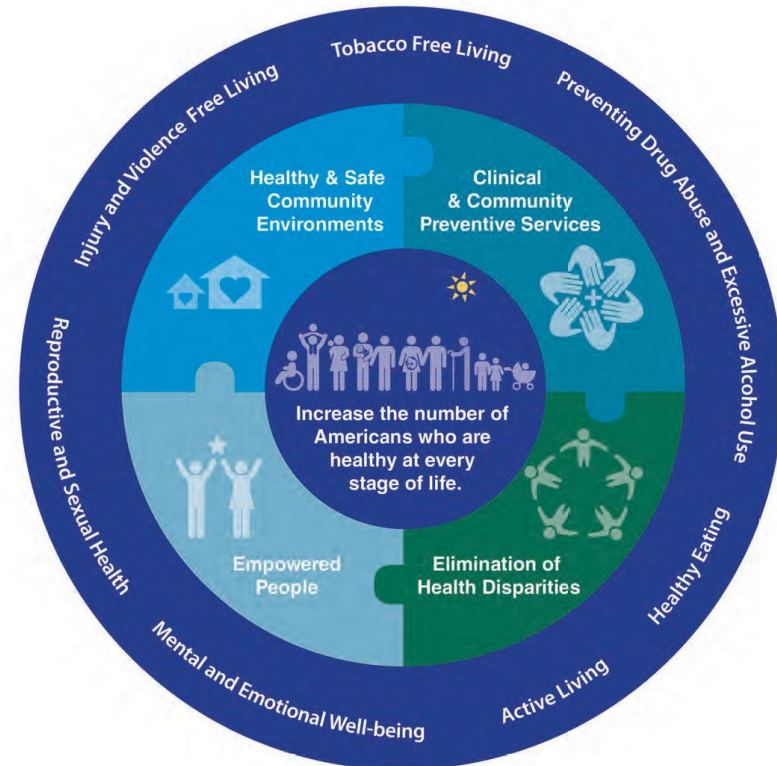
- ***National Prevention Council***

- “Integrate health criteria into decision making across multiple sectors”
- “..coordinate investments in transportation, housing, environmental protection and community infrastructure to promote sustainable and healthy communities.”

- ***Let’s Move***

- ***Healthy People 2020***

- ***Sustainable Communities Partnership—HUD, DOT, EPA, now USDA and CDC***



Recent Developments in the Field

Metropolitan Planning Organizations

Associations of local governments created by Congress to plan regional transportation

- Several MPOs now using HIA (Nashville, San Diego, others)
- Health Impact Project call for proposals:
 - No proposals for funding in 2010
 - Over 10 proposals in 2011

Learn more:

- ***Transportation session today at 11:30***
- ***SANDAG talk today at 2:15***

Recent Developments in the Field *Legislation*

- *Massachusetts Healthy Transportation Compact*: requires DOT and DPH to implement HIAs for transportation projects
- *Do people think this is a good idea?*
71% favor/25% oppose according to a poll of WA voters on pending legislation.

Learn more:

-2:15 *Approaches to Implementing HIA (HIA legislation)*

-3:30 in *Institutionalizing HIA (Implementing MA transportation compact)*



Recent Developments in the Field

Institutionalization

State of Alaska:

- Collaboration with Dep't of Natural Resources
- HIAs on all large natural resource development projects
- Self-supporting

Learn more:

-12:45 *Making HIA Stick*

-3:30 *Institutionalizing HIA*


State of Alaska H&SS Public Notice myAlaska Health & Social Services find

Epidemiology

Public Health > Epidemiology > Alaska Health Impact Assessment

Alaska Health Impact Assessment (HIA) Program

The Alaska Health Impact Assessment (HIA) Program evaluates the potential human health effects of new policies, programs, or development projects in Alaska through the use of existing public health surveillance data, medical literature reviews, and field studies. While HIAs are not required by state law, they are seen as one aspect of a "best practices" approach to responsible development in Alaska.



Highlights

- Conditions Reportable
- Epidemiology Bulletins
- Epidemiology Publications
- Bibliography of Published Studies
- Links of Interest
- Epidemiology Contact List

Epidemiology Programs

- Environmental Health
- Health Impact Assessment
- HIV & Sexually Transmitted Disease
- Immunization
- Infectious Diseases & Tuberculosis Control
- Injury Surveillance

Public Health

- Public Health Home
- Certification & Licensing
- Chronic Disease Prevention and Health Promotion

HIA Resources

- Centers for Disease Control HIA Resources
- Health Impact Project
- World Health Organization
- University of California, Los Angeles

Program Contact

Paul Anderson M.D., M.P.H.
Health Impact Assessment (HIA) Program Manager
State of Alaska

Recent Developments in the Field

Institutionalization

San Francisco Department of Public Health—Program on Health Equity and Sustainability

- Not new, but innovating new ways to collaborate across sectors
- Roots in HIA
- Multi-agency collaboration to bring health into many city decisions
- Largely self-supporting

Learn more:

-12:45 *Making HIA Stick*

-3:30 *Institutionalizing HIA*

PROGRAM ON HEALTH, EQUITY AND SUSTAINABILITY
SAN FRANCISCO DEPARTMENT OF PUBLIC HEALTH

HOME ABOUT ELEMENTS OF HEALTH SERVICES RESOURCES NEWS CONTACT

ELEMENTS OF HEALTH

ABOUT US

The Program on Health, Equity and Sustainability supports San Franciscans working together to advance urban health and social and environmental justice through ongoing integration of local government and community efforts and through valuing the needs, experiences, and knowledge of diverse San Francisco residents.

LEARN MORE »

Air Water Food Housing Greenspace

Land Use Transportation Work Noise Climate

NEWS

FREE HDMT Training - May 7, 2012
Topic: Health
March 15, 2012

HIA Guide for Practice Released
Topic: Health
February 01, 2012

Save-the-Date: HIA Summer Training

DOCUMENT LIBRARY

HEALTHY DEVELOPMENT TOOL

Is it making a difference?

Better policies; Securing funding



Atlanta Beltline HIA – Over \$4 million in funding for trails and brownfield cleanup

Oregon Farm to School HIA
– improve legislation to create more in-state jobs



Is it making a difference?

New baseline data; new safety measures



- Site-specific air modeling
- Traffic studies
- Contaminant studies in fish and game

-Diet and food security studies
& monitoring

Learn more:

11:30 AM, Policymaker Track



Is it making a difference?

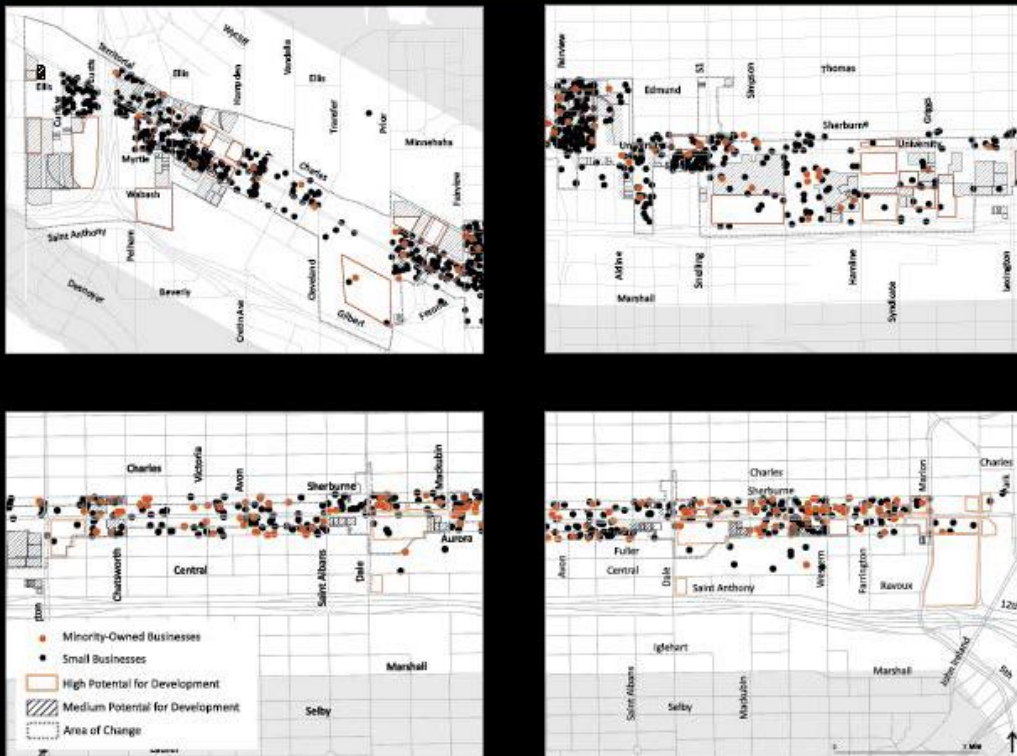
Giving vulnerable communities a stronger voice

Healthy Corridor for All

<http://www.healthimpactproject.org/hia/us/st-paul-light-rail>

Learn more: Wed, 9:30-11:00 Plenary

FIGURE 8. SMALL AND MINORITY-OWNED BUSINESSES ON REZONED PARCELS



Healthy Corridor for All

A Community Health Impact Assessment of Transit-Oriented Development Policy in Saint Paul, Minnesota

SUMMARY

PolicyLink TAKE ACTION MN ISAIAH

Is it making a difference?

“Working ourselves out of a job”

- GIS-based health planning tools
- Checklists
- Routine consultation/ collaboration

Health Impact Assessment: GIS Interface Planning Matrix - Windows Internet Explorer

http://www.cavoices.org/healthy/lifestyles/environmental/HIA/matrix

File Edit View Favorites Tools Help

Health Impact Assessment: GIS Interface Planning Ma...

Health Impacts Checklist: GIS Interface Planning Matrix

Question on Checklist	Purpose of question	Type of Data Needed	Data Source	Critical Threshold or Quantitative Data for Decision Making
Water Quality Considerations/Impacts				
What is the source of water for the proposed project? <ul style="list-style-type: none"> • If municipal, does the project fall within existing service areas? • What is the estimated daily water demand for the project? • Does this exceed existing production capacity in municipal facilities? 	To ensure that development does not outstrip capacity in existing capital facilities (both water and sewer) To ensure that safe water is provided for all residents	Coverage / service area for municipal water services	TCRPC for service boundaries Board of Water & Light (517)702-6494 DEQ Source Water (517) 241-1359 Center for Geographic Information http://www.mcgi.state.mi.us/mgdi/?action=dm	No standardized threshold. Will vary according to municipal facility.
What is the water quality in the proposed project area? Is the water considered safe (potable)?	To ensure that water for project is safe	Water chemistry data	ICHD MDEQ wellviewer.rsgis.msu.edu	
Are there nearby sources of potential water contamination? <ul style="list-style-type: none"> • Are there underground storage tanks? • Are there gasoline pipelines? • Is there a nearby known source of contaminated soil? (E.g., a Superfund site; state-identified toxic brownfields) 	To ensure that water wells or local water sources are not placed near areas of contamination	Location of underground storage tanks; gasoline pipelines; Superfund sites; state-designated toxic sites	EPA – surf your watershed http://cfpub.epa.gov/surf/state.cfm?statepostal=MI MDEQ wellviewer.rsgis.msu.edu	(need to illustrate buffer as a safety zone within which development should not take place)
Are there any abandoned water wells on the site?	To ensure that abandoned wells are identified and capped before digging up the land and causing pollutants to penetrate through open wells.	Location of abandoned wells; requires physical inspection	Property records history. Don't think there are any maps on this	Property must be located outside the wellhead protection map
Will the water supply require on-site treatment, such as iron removal?	To ensure good water quality, appearance and taste.	Water chemistry data	ICHD MDEQ wellviewer.rsgis.msu.edu	0.3mg/l for iron in drinking water According to DNR

Ingham County, Michigan
 San Francisco DPH—
www.thehdmt.org

Healthy Development Measurement Tool

A comprehensive evaluation metric to consider health needs in urban development

Home Introduction The Tool HDMT Instructions Application Resources About

Recent News

2012-05-26 Registration Open: HIA Summer Training Course July 16-19, 2012

SFDPH is pleased to announce that registration is now open for the fifth annual summer training course for health impact assessment (HIA) practitioners. The overall goal of the course is to provide current and future practitioners of HIA experience using available procedures, regulations and tools to implement an HIA. Registration is open through June 29, 2012, however spots are limited so early registration is encouraged. Visit the [SFDPH HIA training page](#) for more details and the registration form.

2012-05-14 FREE HDMT Training - May 7th 2012

SFDPH is excited to announce an upcoming training for the [Healthy Development Measurement Tool](#) (HDMT) on May 7th, 2012 in San Francisco, CA. The training will provide an introduction to the HDMT and its website, demonstrate how HDMT indicators and data can be used, illustrate how HDMT development targets can be applied to land use projects, and help you consider the ways that the HDMT framework and content is relevant to your work. An informational flyer can be downloaded [here](#). To register for this training please fill out the online registration form at <http://bit.ly/HDMT2012>. For more information contact Meg Wall at Megan.Wall@sfph.org.

2012-02-01 Pardon our dust

The HDMT is currently being updated with new indicator data from the 2010 Census and other sources. We apologize if you experience technical issues with some of the indicator pages during this ongoing process. We anticipate completing our updates sometime in Spring 2012. Thank you for your patience! If you have any questions, please contact Meg Wall at dotwall@sfphdot.org.

Visit the [HDMT News Archive](#).

Get Started... The Tool Who We Are



WWW.COUNTYHEALTHRANKINGS.ORG

About the Project [FAQs](#) [News](#) [For Media](#) [Site Search](#)

 **County Health Rankings**
Mobilizing Action Toward Community Health

 **OUR APPROACH**

 **RANKING METHODS**

 **ACTION STEPS**

 **YOUR STORIES**

Find Health Rankings:
 

The map displays the United States with state abbreviations: WA, OR, CA, NV, UT, AZ, NM, TX, MT, WY, CO, KS, OK, ND, SD, NE, MN, IA, MO, AR, LA, WI, MI, IL, IN, OH, KY, TN, MS, AL, GA, FL, NY, PA, WV, VA, NC, SC, NH, ME, VT, MA, RI, CT, NJ, DE, MD, DC, HI, and AK. Insets for Alaska and Hawaii are shown to the left of the main map.

Public health – a turning point

“Public health agencies alone cannot assure the nation’s health”

Institute of Medicine, 2002. The Future of the Public’s Health in the 21st Century

Is HIA Valuable?

National Research Council

HIA “seeks to correct the fundamental problem of failing to consider health at all in decision-making.

The Committee concludes that HIA is valuable even with a lack of perfect forecasting data and tools because it is better to consider potential health risks and benefits than to ignore them routinely.”

Learn more: Wednesday,
11:15-12:30

IMPROVING
HEALTH
IN THE
UNITED STATES

The Role of
Health Impact Assessment

Committee on Health Impact Assessment
Board on Environmental Studies and Toxicology
Division on Earth and Life Studies
National Research Council

NATIONAL RESEARCH COUNCIL
OF THE NATIONAL ACADEMIES

THE NATIONAL ACADEMIES PRESS
Washington, D.C.
www.nap.edu

HIA offers a practical tool to build partnerships with other sectors

- *Establishing a vocabulary, framework, and systems for productive collaboration.*
- *A structured approach that facilitates collaboration in the setting of real-time planning and decision-making*
- *HIA on a single project as a starting point for new, enduring interdisciplinary collaboration*
- ***Leveraging investments in transportation, housing, energy, social programs, etc to improve health***

Thank you

