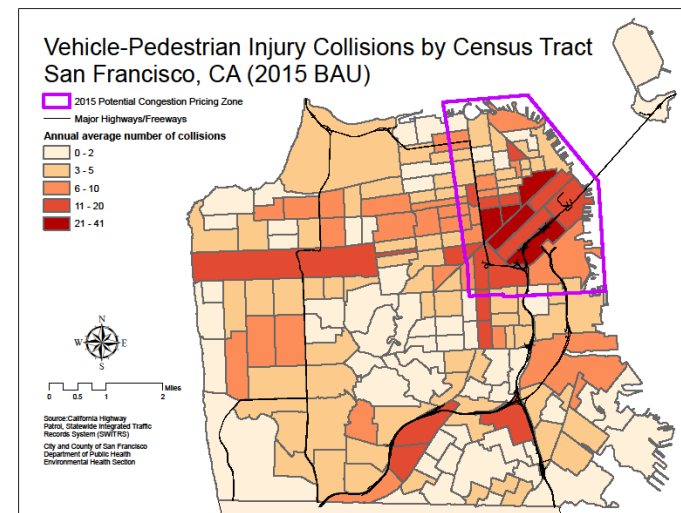


Health and Equity Metrics for Sustainable Development



Rajiv Bhatia, MD, MPH
San Francisco Department of Public Health

Social and Environmental Justice Challenges to Sustainable Development in San Francisco in 2004

- Will development protect and improve environmental quality for existing residents?
- Can development leverage needed infrastructure for health and well being?
- Will development result in displacement or facilitate social inclusion and integration?
- Will economic equity and health be included along with resource conservation in “sustainability?”



Healthy Development Measurement Tool: A product of a community healthy cities vision

- 1) Community vision for a health city (27 objectives)
- 2) Community-level Health Indicators
- 3) Policy and Design Strategies
- 4) Criteria for healthy development
- 5) Public Health Evidence

Healthy Development Measurement Tool
A comprehensive evaluation metric to consider health needs in urban development

[Home](#) | [Introduction](#) | [Tool Instructions](#) | [The Tool](#) | [Application Resources](#) | [About ...](#)

Recent News

2008-05-27 HDMT Website and Data Revision Complete
We recently completed an extensive update to HDMT website content, including to indicators and data, development targets and checklist, and neighborhood profiles. In addition, we added a "Tool Instructions" section to the website to better explain how the HDMT can be applied. Thank you for your patience as we completed this update.

2008-05-27 Draft Evaluation of Eastern Neighborhoods Area Plans Released
The public draft of our evaluation of the Eastern Neighborhood Area Plans using the HDMT is now available. [Click here](#) to download the report "[Impacts on Community Health of Area Plans for the Mission, East SoMa, and Potrero Hill / Showplace Square: An Application of the Healthy Development Measurement Tool](#)".

For additional HDMT updates and changes, please visit [News Archives/Corrections and Errors](#).



Get Started...	The Tool	Who We Are
<ul style="list-style-type: none"> Begin with an introduction or download a helpful presentation (PDF). Use the Tool. Look at community indicators. Check out SF neighborhood data. Access Tool resources. 	<p>The Healthy Development Measurement Tool is a comprehensive evaluation metric to consider health needs in urban development plans and projects.</p> <p>The HDMT explicitly connects public health to urban development planning in efforts to achieve a higher quality social and physical environment that advances health.</p>	<p>We're committed to assessing urban environmental conditions and responding to health inequities and environmental policy gaps using health impact assessment methods. We're the San Francisco Department of Public Health, Program on Health, Equity and Sustainability.</p> <p>Be sure to contact us with any questions or comments.</p>

[Home](#) | [Introduction](#) | [Tool Instructions](#) | [The Tool](#) | [Application Resources](#) | [About ...](#)
[Login](#) | [Sitemap](#) | [Contact Us](#)
 The Healthy Development Measurement Tool | San Francisco Department of Public Health, Copyright © 2006
 Page accessed on Monday, July 14, 2008 at 01:16 PM.

**Map of
areas
exceeding PM
2.5 standards:**

Identifies high
pollution areas
for emissions
and exposure
reductions



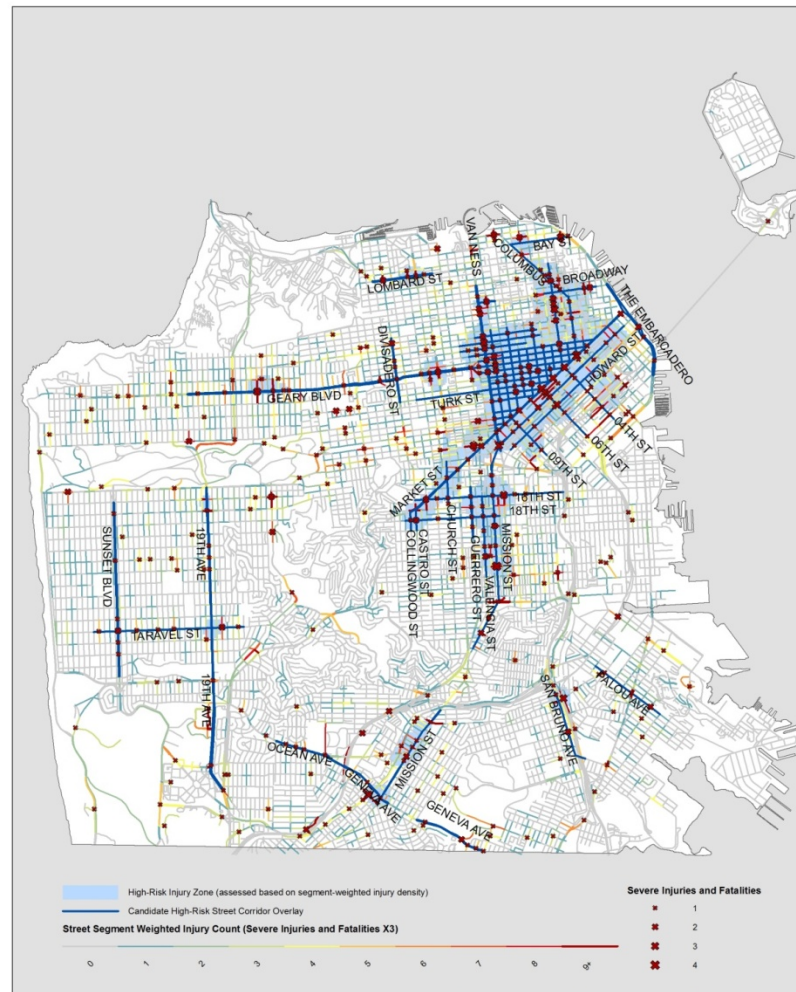
Use of air and noise pollution exposure analysis to protect health in industrial to residential rezoning

- Rezoning of historically industrial lands threatened new environmental impacts on residents from noise, air pollutants, traffic hazards
- Air and noise pollution analysis justified new mitigations to reduce noise and air pollution exposure for new residents:
 - Stronger ventilation requirements for traffic affected developments
 - Analysis and mitigation of noise conflicts



Map of High Corridor Injury Density:

Seven percent of city street miles account for 55% of serious and fatal pedestrian collisions

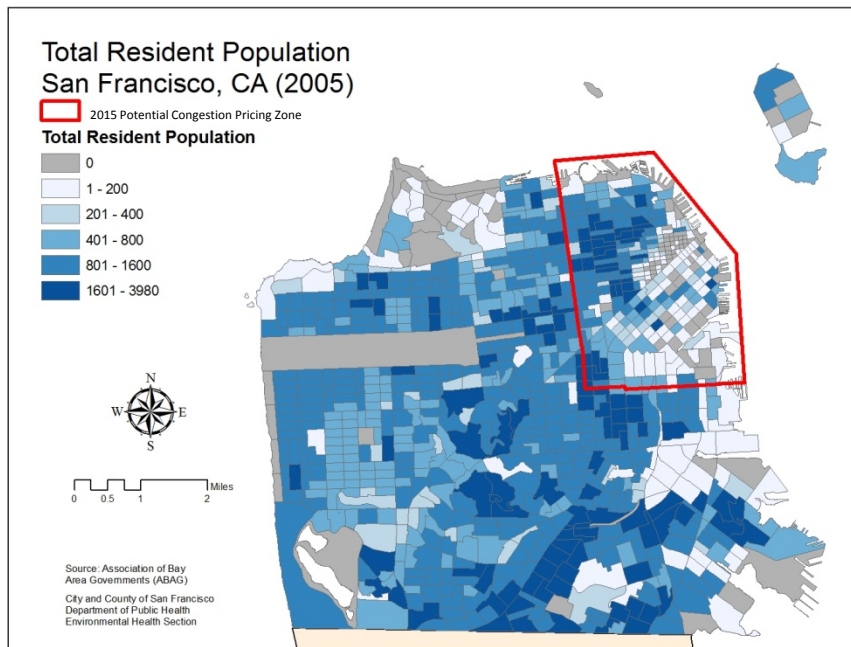


Source: California Highway Patrol, Statewide Integrated Traffic Records System (SWITRS)
City and County of San Francisco Department of Public Health, Environmental Health Section
For more information regarding this map please contact Megan Wier at megan.wier@sfdph.org

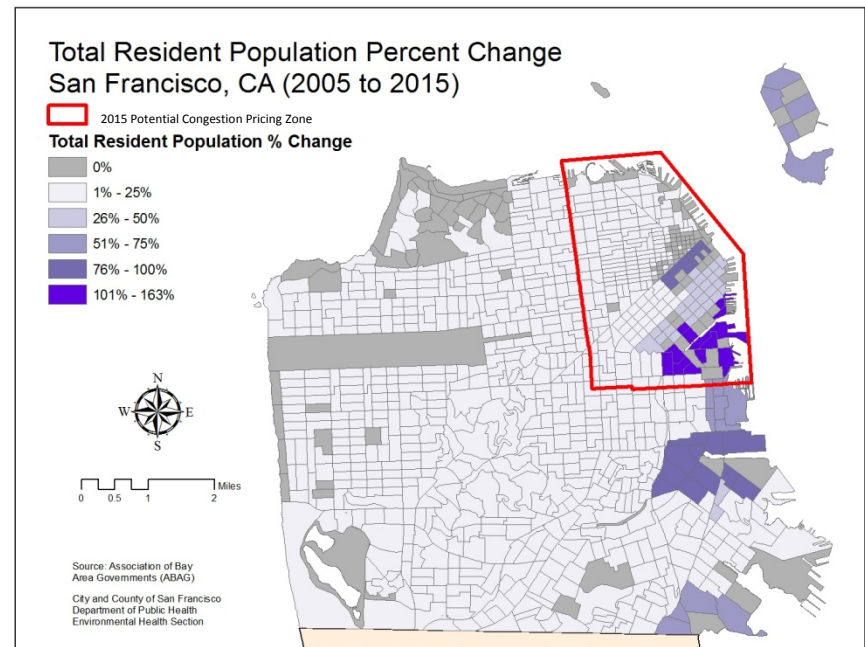
High-Injury Corridor Analyses Influenced Citywide Pedestrian Safety Planning

- Reprioritized enforcement and engineering resources
 - Routine police presence along corridors
 - Engineering plans for high-injury corridors
- Identified gaps in existing safety toolkit
 - Arterial traffic calming
 - Photo-enforcement of speed
 - Turning restrictions
- Increased attention to policy obstacles
 - Insufficient funding for pedestrian safety
 - Prioritization of vehicle needs
 - Need for inter-agency coordination

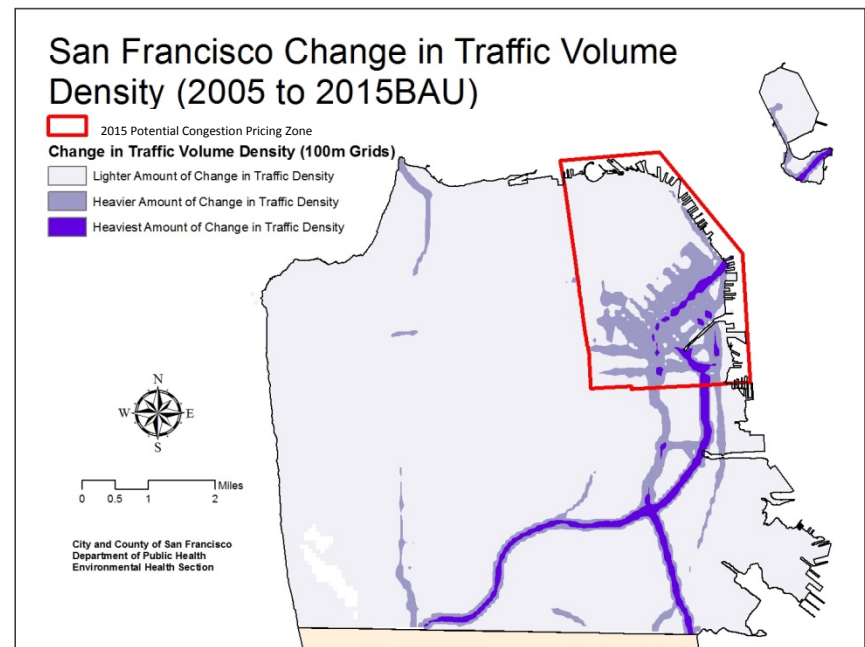
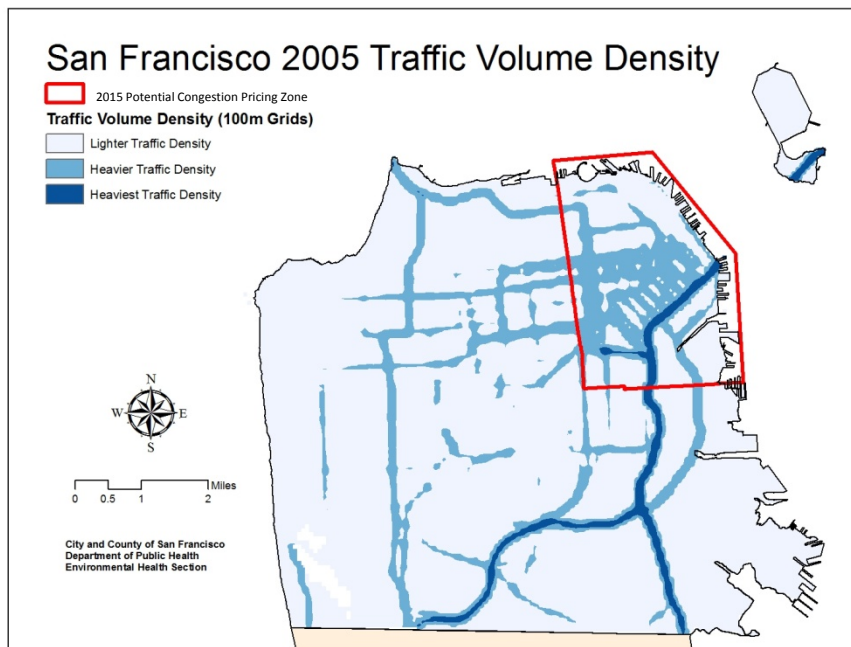




2005



2015 "Business As Usual"

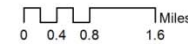


Mapping public infrastructure quality and access

Illustrates a smart growth challenge of providing quality school resources in “infill” areas



Elementary Education Access Score
High : 100
Low : 0



Source: California Department of Education,
2010; US Census 2010

City and County of San Francisco
Department of Public Health
Environmental Health Section

Technical challenges to equity indicator development: *The example of neighborhood food resources*

- What is the right spatial scale for measuring food resources
- How to incorporate quality, choice, cost, and transport into measures of access?
- What is an actionable to improve equity of food resources?

Food Access Indicator - Draft 1

All Food Retail

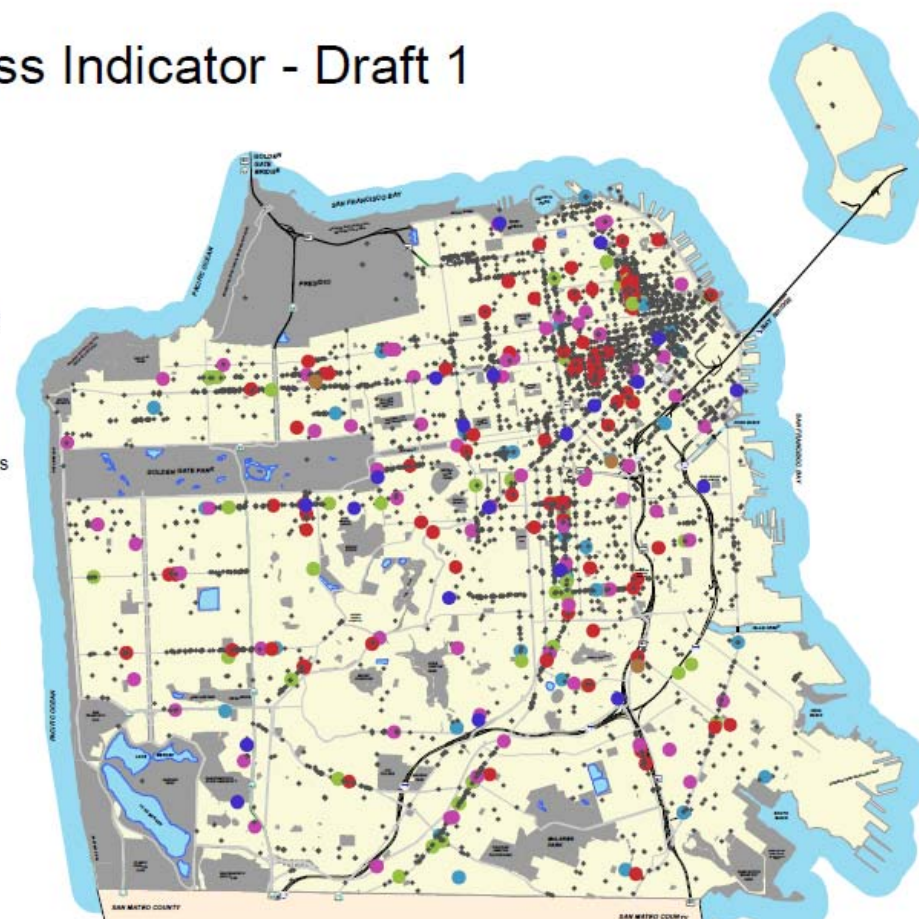
- All Other Types
- Farmers Market
- Fruit/Vegetable Market
- Grocery, Other
- Meat/Fish/Poultry
- Supermarket
- Warehouse Club Stores

0 0.5 1 2 Miles

Source: Dun & Bradstreet, 2011

City and County of San Francisco
Department of Public Health
Environmental Health Section

Available at www.thehdmt.org



Broader Lessons and Opportunities

- Planning institutions do not act holistically to create conditions needed to fulfill human needs.
- Performance measures for health and equity are needed to advance a human needs agenda in sustainable development.
- Need to use robust, scalable, and valid measures to assess equity.
 - Do measures speak to actual human needs?
 - Who are vulnerable populations (e.g. transit dependent)?
 - Does aggregate analysis hide disproportionate impacts?



Resources:

San Francisco Bay Area
HEALTH IMPACT ASSESSMENT COLLABORATIVE

Search...

HOME ABOUT US CASE STUDIES TOOLS PARTNERSHIPS TRAINING + MENTORSHIP POLICY DISCUSSION BOARD

TRAINING + MENTORSHIP
We provide presentations, lectures, and workshops, as well as technical support and mentorship nationally.

TOOLS
Collaborative members have developed and applied a number of innovative evidence-based tools. Find them here.

DISCUSSION BOARD
Post and review questions on starting your own HIA, resource and capacity needs, influencing decisions and more.

FAQ
Find answers to all your HIA related questions including "What is HIA?" and "What does

Who We Are
We are a group of academic, government, and non-profit HIA practitioners who have joined together to be more effective in conducting HIA, engaging stakeholders in partnerships, providing training, and helping to develop policy. [MORE >](#)

Case Studies
National Paid Sick Days HIA Released - June 2009: Collaborative members are excited to release an HIA of a proposed national paid sick days law. [MORE >](#)

WHAT'S NEW

Minimum Elements and Practice Standards for HIA - Newly Released!
November 2010
The HIA of the Americas Practice Standards subgroup is excited to release an updated version of the "Minimum Elements and Practice Standards for Health Impact Assessment (HIA)". Minimum Elements answer the question of "what essential elements constitute an HIA" as distinct from Practice Standards, which answer the question, "how to best conduct an HIA." Overall, the hope is to translate the values underlying HIA along with key lessons from HIA practice into specific standards for practice for each phase of the HIA process.

Draft San Francisco Public Housing Redevelopment HIA Released
August 2010
The UC Berkeley Health Impact Group is excited to release a public draft of a retrospective HIA of redevelopment of two public housing sites through the federal HOPE VI program. The HIA asked the

SF HIA Collaborative

www.hiacollaborative.org

SF Department of Public Health

www.sfphes.org

Healthy Development Tool

www.thehdmt.org

UC Berkeley HIA Group

<http://sites.google.com/site/ucbhia>

Human Impact Partners

www.humanimpact.org