



# How States Can Strengthen Access to Treatment

Components of an effective substance use disorder treatment system



## Timely

Ensures that capacity exists to meet treatment demands through the availability of facilities, providers, and services



## Evidence-based

Utilizes and covers all Food and Drug Administration-approved medications for the treatment of substance use disorder (SUD) and behavioral health services



## Comprehensive

Provides coverage of the full spectrum of treatment by public (such as Medicaid) and private insurers



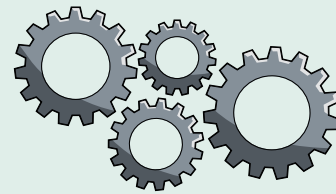
## Sustainable

Uses funding efficiently, optimizes federal funding resources, and collaborates with community-based partners to augment treatment services

**Substance use disorder workforce** A robust pipeline of clinical and nonclinical providers who deliver prevention, treatment, and recovery services to people with SUD

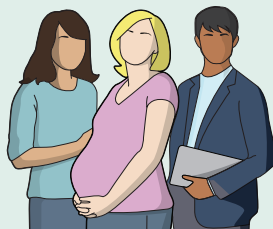


**Treatment system transformation** Models and approaches that affect the delivery of care in states

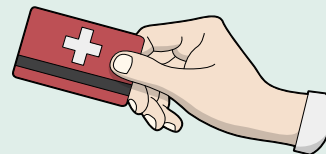


Timely  
Comprehensive  
Evidence-based  
Sustainable

**Underserved populations** People and communities requiring specialized care or services that have access to treatment



**Coverage and reimbursement** Insurance policies, payments, and benefits provided by payers that ensure access to care



---

**For further information, please visit:**

[pewtrusts.org/substancemisuse](https://pewtrusts.org/substancemisuse)

---

**Contact:** Erin Davis, communications

**Email:** [edavis@pewtrusts.org](mailto:edavis@pewtrusts.org)

**Project website:** [pewtrusts.org/substancemisuse](https://pewtrusts.org/substancemisuse)

---

**The Pew Charitable Trusts** is driven by the power of knowledge to solve today's most challenging problems. Pew applies a rigorous, analytical approach to improve public policy, inform the public, and invigorate civic life.