



# HIA

## Experiences from an Environmental Lawyer in LA



Adriano Martinez, Staff Attorney





# **I-710 HIA Case Study**

**I-710 expansion is one of the largest transportation infrastructure projects being proposed in the nation**

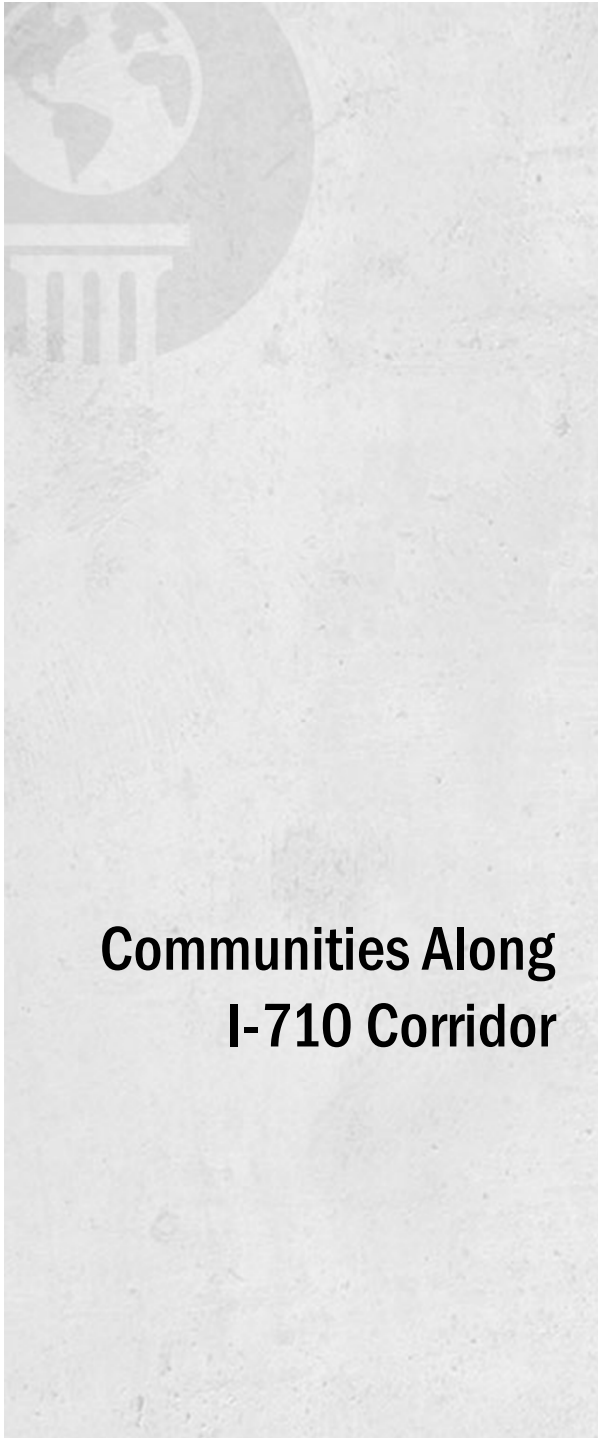
**HIA was a key demand from the Coalition for Environmental Health & Justice (“CEHAJ”)**

**The agencies decided to undertake an HIA**

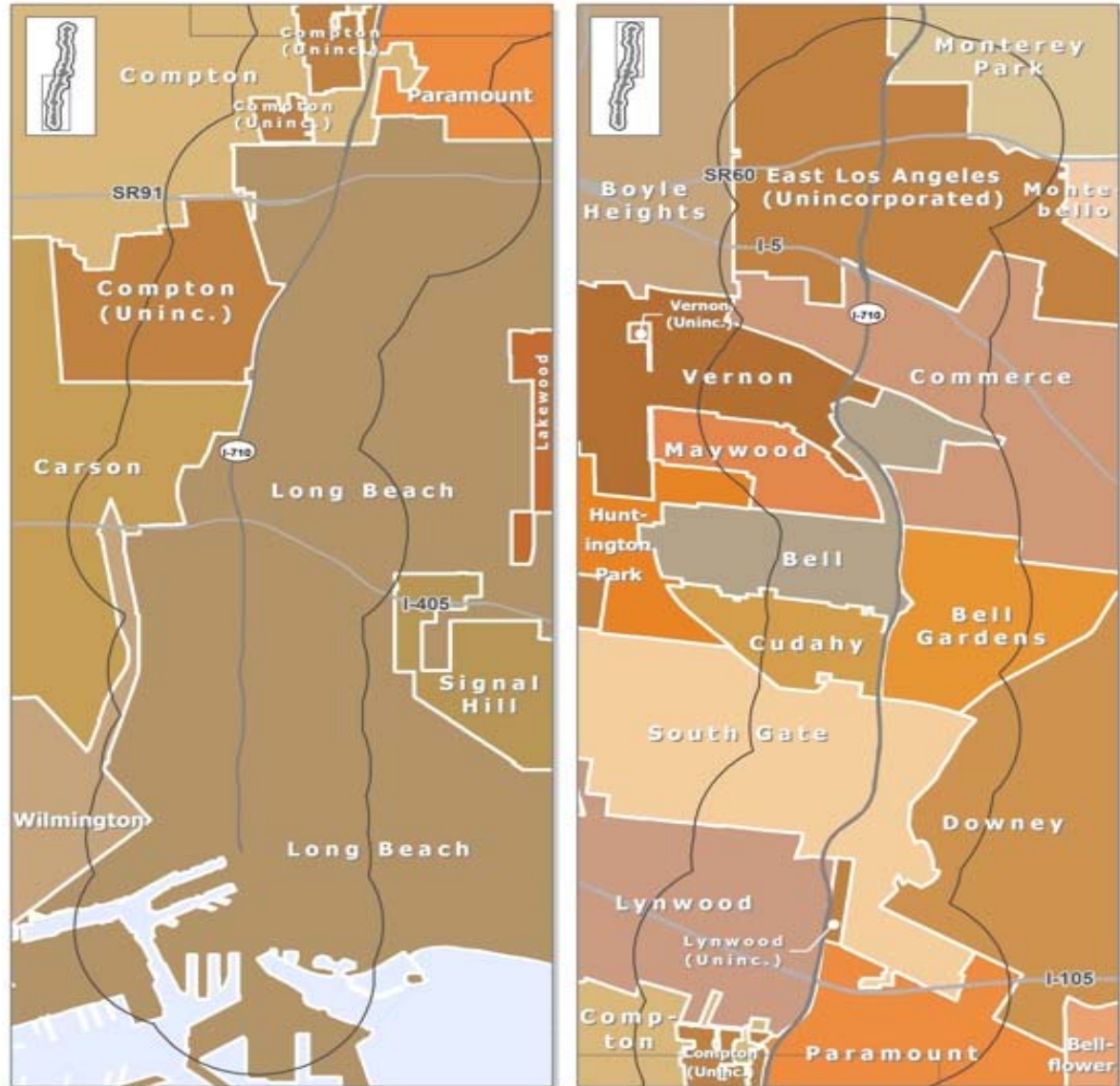






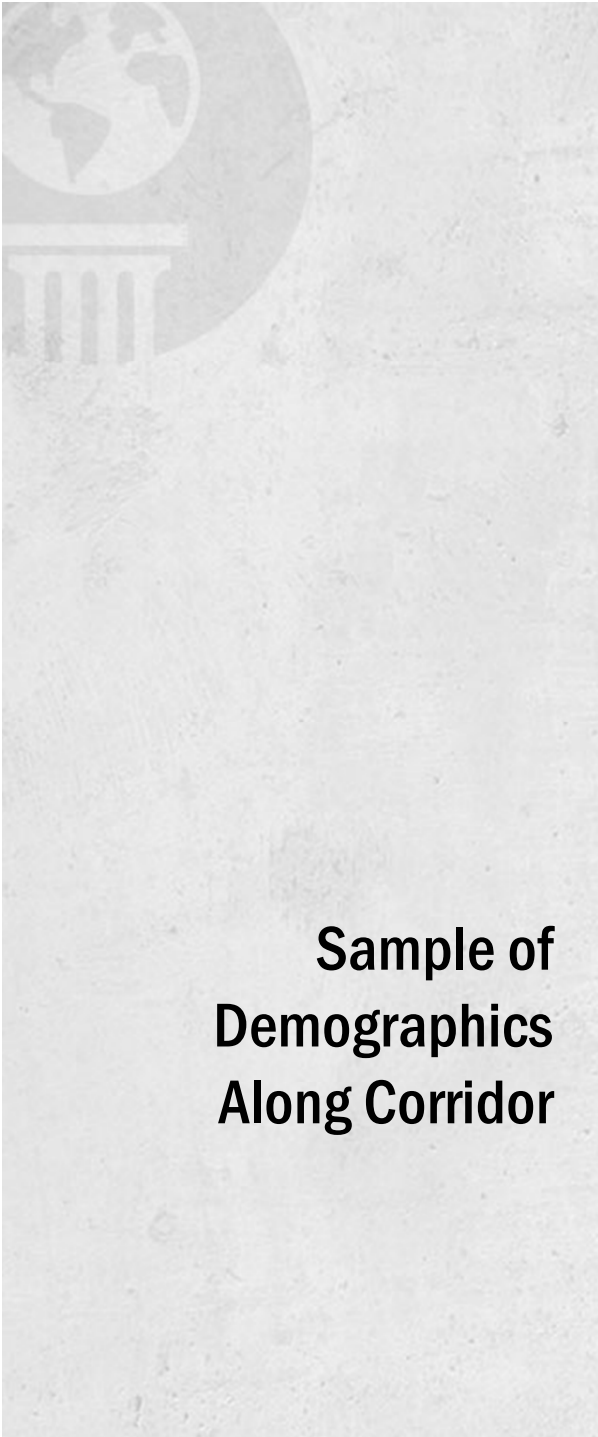


# Communities



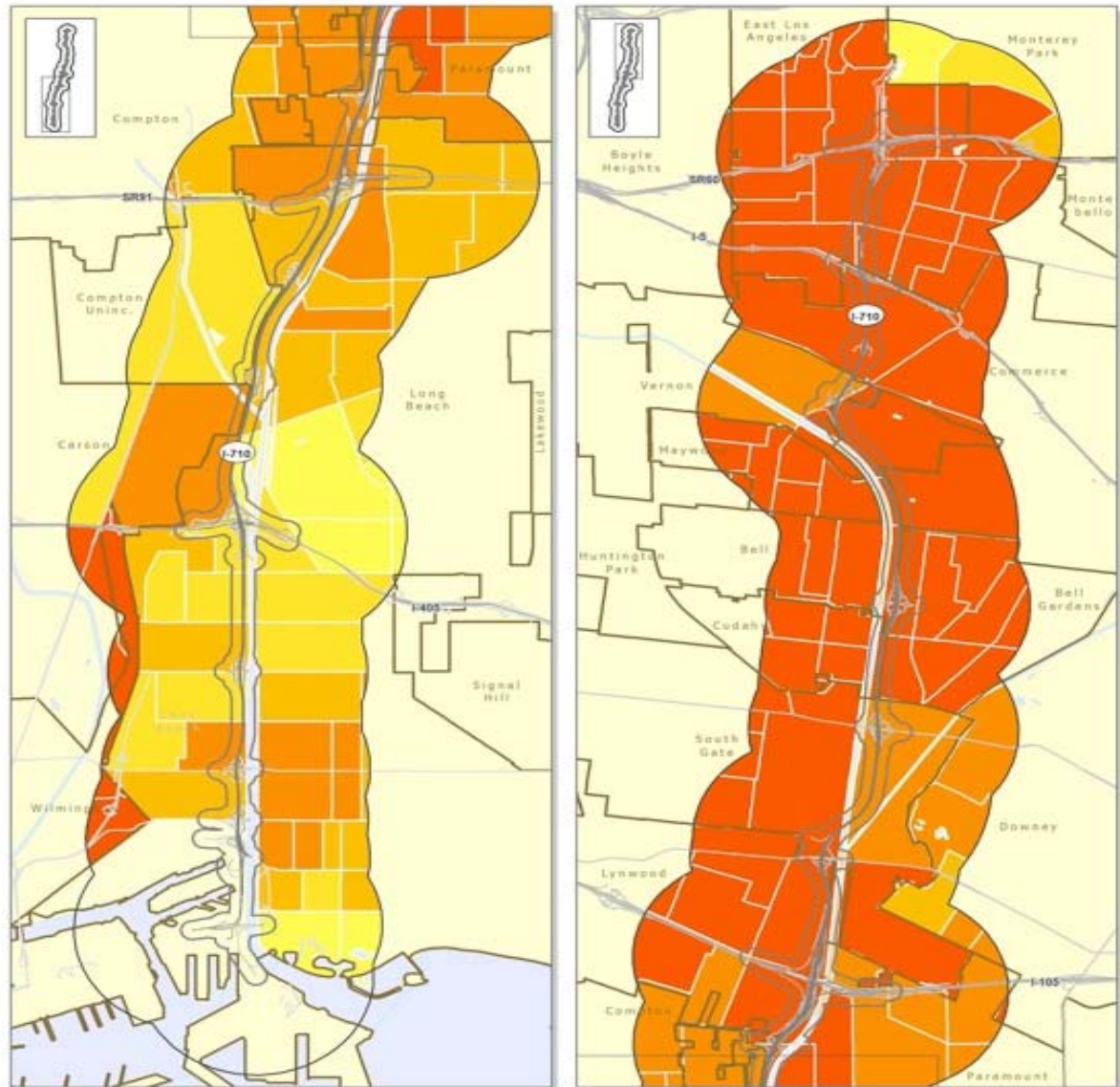
☁ 1 mile buffer





## Sample of Demographics Along Corridor

### Percent Polulation Hispanic or Latino (Est.)



- 150 meter buffer
- 1 mile buffer

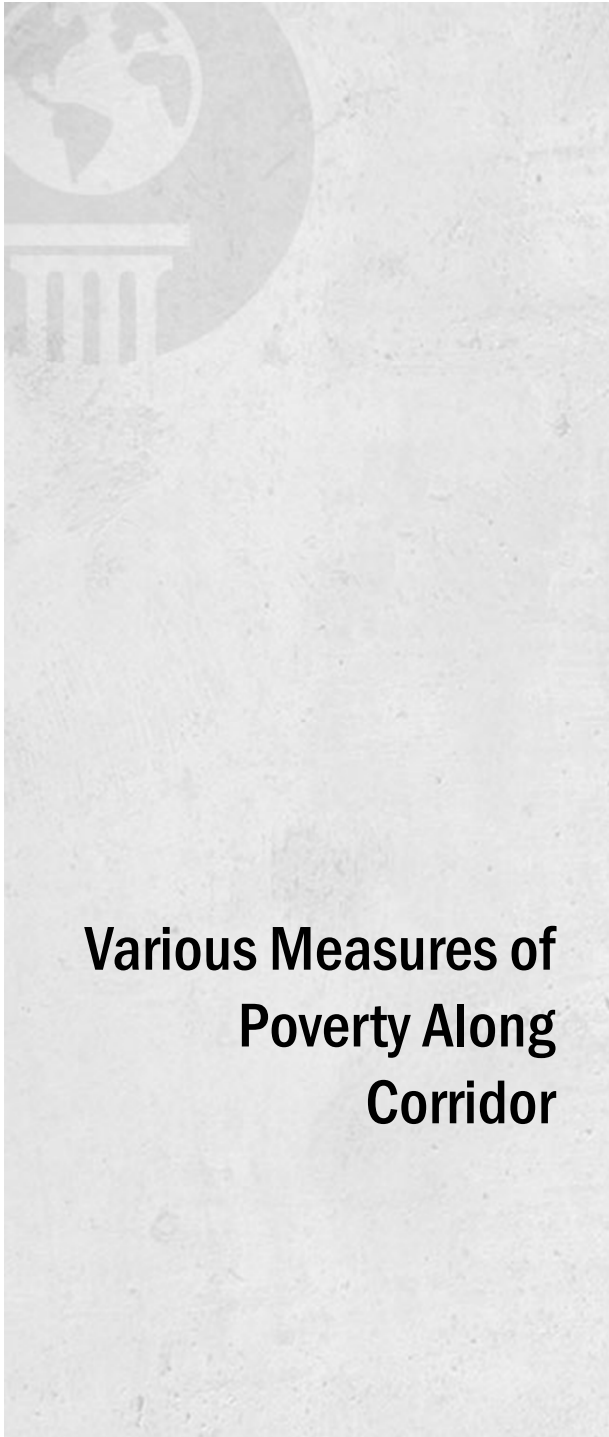
#### Percent Hispanic or Latino



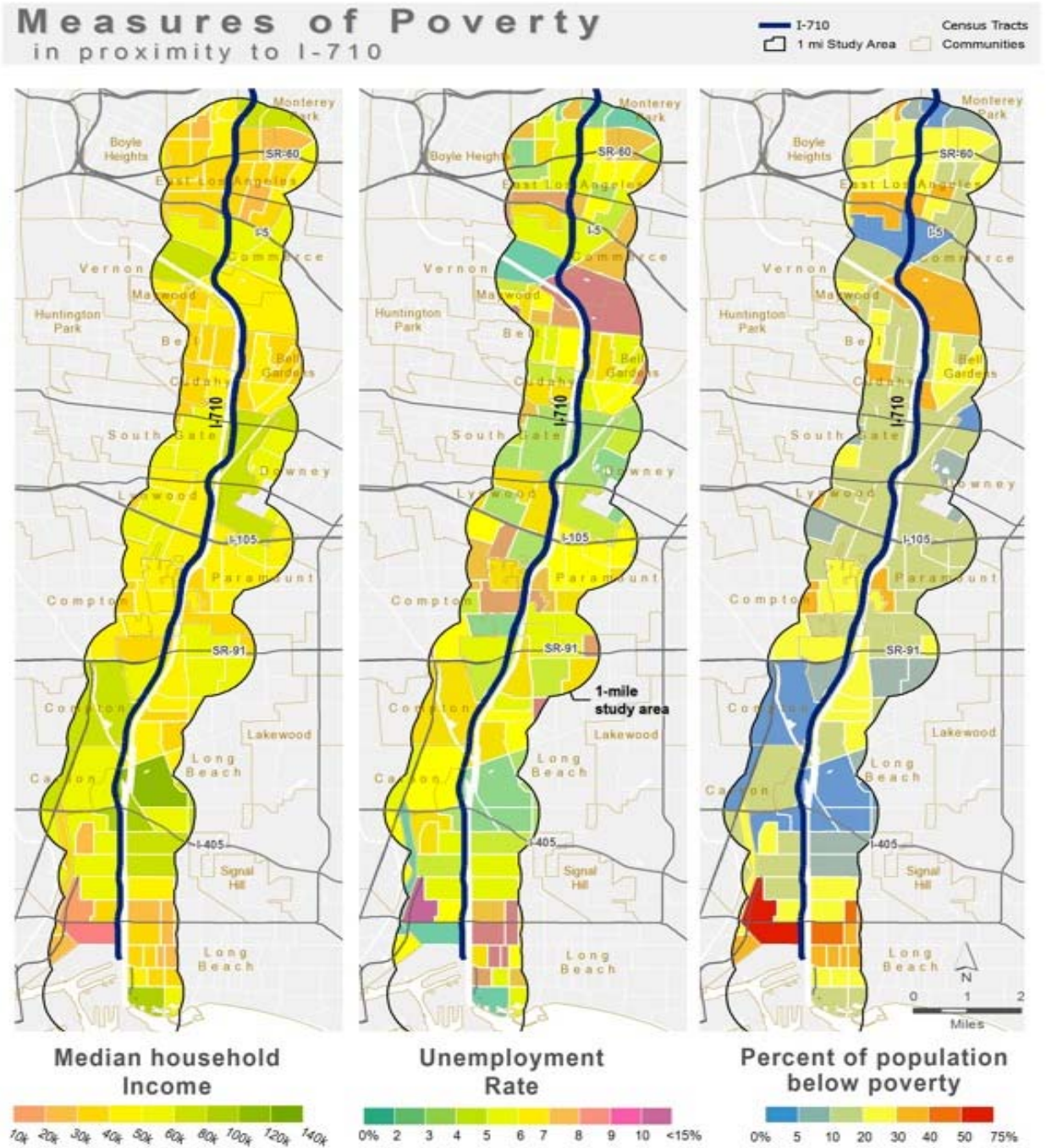
Source: 2005-2009 American Community Survey (ACS) 5-year Estimate







# Various Measures of Poverty Along Corridor





**EARTHJUSTICE**  
BECAUSE THE EARTH NEEDS A GOOD LAWYER



/ earthjustice



@earthjustice

earthjustice.org