



Family Unity, Family Health:
How Family-Focused Immigration Reform Will
Mean Better Health for Children and Families



Jonathan Heller, Co-Director
Human Impact Partners

National HIA Meeting
September 24 & 25, 2013 -- Washington, D.C.

Why do an HIA on Immigration Reform?



Reasons to do the HIA

Political moment after 2012 election

Senate approved S.744 in June 2013

Vulnerable populations

11 million undocumented residents

Detentions and deportations at historic levels

Policy has documented but not widely considered health implications

Stakeholders interested; funding available

Could support campaigns for reform

U.S. CHILDREN AFFECTED BY DEPORTATION, 2012

88,517 Removals in FY2012 who reported at least 1 U.S.-citizen child

X **2.10** Average number of children in undocumented households

X **82%** Estimated proportion of children to undocumented immigrants that are U.S.-born

152,426 Estimated number of U.S.-citizen children affected at FY2012 level

Reasons to not do the HIA

Timing uncertain

Minimal data

Politically contentious/highly partisan issue

Questions about ability to influence decisions

2

HIA was started in December 2012
House considering what to do now
Bring public health voice into the debate

Partners and Roles



Advisory Committee

Non-partisan research, child advocacy, and immigrant grassroots organizations; academics and physician

Surveys

17 immigrant grassroots organizations in 11 states

Focus Groups

CHIRLA

Communications

Rosten Woo, Spitfire Strategies, Rep. Roybal-Allard's office

Funders

The Jacob and Valeria Langeloth Foundation
The California Endowment

3

Who was not involved?

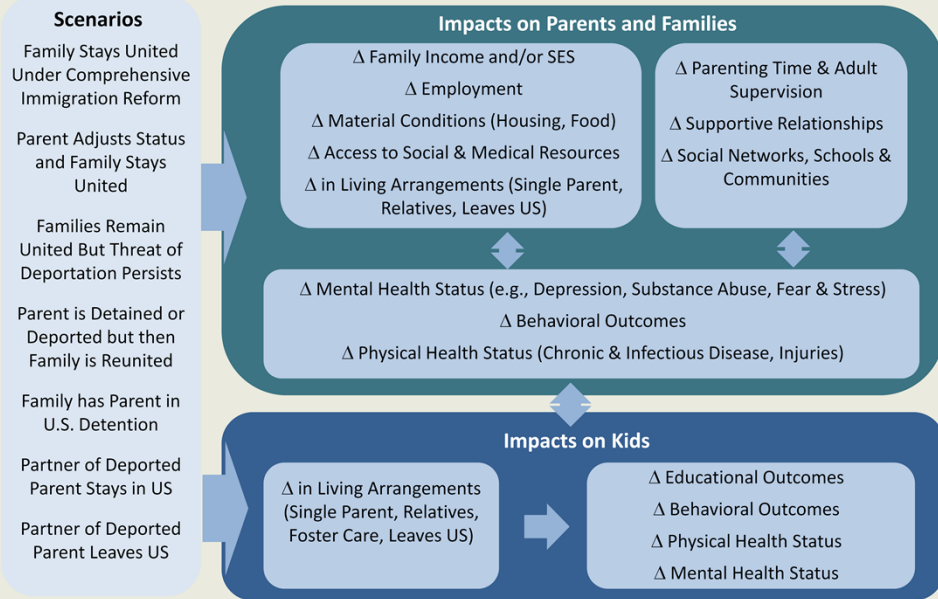
Legislators

Department of Homeland Security

Department of Health and Human Services

Anti-immigrant organizations

HIA Focus: Detentions and Deportations



Many aspects of CIR we could have focused on (e.g., guest worker programs, border security, etc.).

Chose to look at deportations and detentions and their impacts on children and families. Why? 1) effects many vulnerable populations; 2) issue was focus of significant advocacy; 3) clear health implications; 4) good framing

Literature review (n=59)

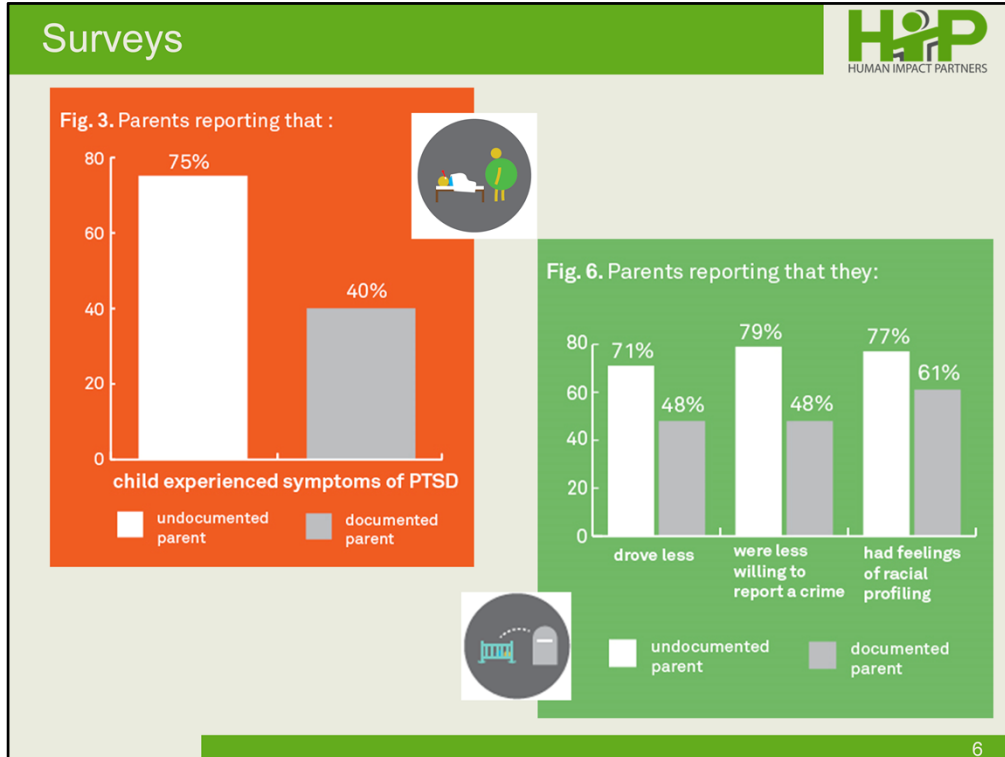
Review of existing statistics and data

Convenience survey with parents and youth living in mixed-status families (n=533)

Focus groups (n=2)

Interviews with doctors or providers serving immigrant populations (n=3)

Quantitative predictions (n=7)



2 surveys: immigrant adult (with children) and immigrant youth
 2 pages each (24 questions); Spanish and English versions
 Collected 657 (470 adult; 187 youth); analyzed 533 (416 adult; 127 youth)
 17 partners in 10 states (AL, CA, FL, ID, NE, NV, NY, VA, TX, WA)
 Collected over 2 months in early 2013
 Significant feedback from AC on questions
 Used standardized questions when possible (e.g., CHIS, abbreviated PTSD checklist)
 Asked about legal status indirectly (i.e., how might detention and deportation affect me?)
 Analyzed in R
 Limitations: convenience sample (not random); selection bias (e.g., participants were members of orgs, not all types of immigrants); self reporting
 Questionnaires and analysis available in appendices

Focus Groups



"[My cousin] has two girls and they were very badly traumatized when he left. [The girls] didn't understand why they had to take him away and why he left just like that. I observe that [one of them] is much different, very unsettled. She is "gone" for the reason that her father is gone . . . She was very happy, very attached to her father and now, she is not the same, no longer attached."

– Daniela, undocumented immigrant mother of two daughters



"I stopped seeking/using Medi-Cal for my son two years ago. Because we felt threatened that if we sought Medi-Cal, we would be detected because of my name...So I can't seek Medi-Cal for my son, because they will detect us and they will take us all. That kind of threat of immigration has a great effect on health."

– Isabella, undocumented mother of three sons



CHIRLA recruited participants

1 for parents in Spanish, 1 for DACA youth in English

After focus groups, asked about photos and videos

Used videos on website

Focus group methods and guide in appendix

Quantitative Predictions



Child behavioral outcomes

EXPLANATION:

$$88,517 \times 2.10 \times 82\% \times 67\% = 102,126$$

Removals in FY2012 who reported at least 1 U.S.-citizen child

Average number of children in undocumented households

Estimated proportion of children to undocumented immigrants that are U.S.-born

Proportion of children who showed signs of withdrawal after deportation of parent, at 6 months after immigration-related arrest

Estimated number of U.S.-citizen children who will demonstrate signs of withdrawal annually, if deportations remain at FY2012 levels



Food access

EXPLANATION:

$$88,517 \times 2.10 \times 82\% \times 82.6\% = 125,904$$

Number of parents with at least 1 U.S.-citizen child that will be deported in the next year, if levels stay at 2012 numbers

Average number of children in undocumented households

Proportion of children to undocumented immigrants that are U.S.-born

Proportion of households reported food insufficient at >6 months after parent's detention or deportation

Predicted number of U.S.-citizen children that in the next FY will be in food insufficient households >6 months after parent's detention or deportation, if removals stay at 2012 levels



Also included limitations and sources with each calculation

Summary of Key Findings



If deportations remain at 2012 levels, we estimate annual impacts to include:



Poorer child health

43,000 US-citizen children will experience a decline in health status



Poorer adult health and shorter lifespan

83,000 partners who remain in the U.S. will lose an average of 2.2 years of life – collectively more than 180,000 years



Poorer child behavioral outcomes

100,000 US-citizen children will show signs of withdrawal



Higher rates of poverty

More than 83,000 households will be at risk of poverty



Poorer educational outcomes

US-citizen children will finish fewer years of school and face challenges focusing on studies



Diminished access to food

Over 125,000 children will live in a food insufficient household

Recommendations



Include in the CIR bill:

Path to citizenship; fair financial requirements; end mandatory detentions; waiver provisions recognizing importance of family unification; allow those in process to receive health insurance; allow judges discretion

Reform Department of Homeland Security policies that target immigrant families:

End Secure Communities program; continue agency discretion in deportations; use secure alternatives to detention; continue to collect and release data

Reform Department of Homeland Security policies to protect health and well-being of children:

Provide mechanism to preserve parent-child relations (e.g., phone calls to make childcare arrangements); coordinate programs so parents can fulfill child welfare requirements; training for DHS personnel to reduce trauma

Pass policies to allow for reunification of children with parents or guardians who have been detained or deported

Responsive to health findings

Reporting & Communications



Worked with AC, designer, and communications consultants on:

Materials

Report

Executive Summary

Forward

Website

Photos and videos

Infographic

Press release

Toolkit for advocates

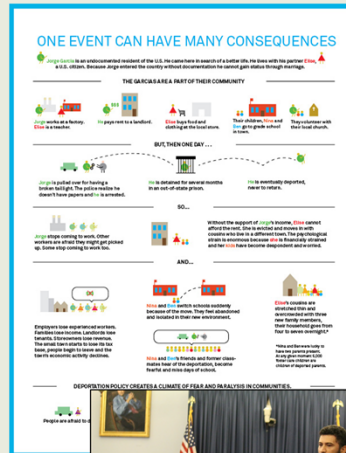
Events

National press call

Local press events (NYC, NE)

Legislative briefing on Capitol Hill

Call for advocates



Outcomes-to-Date



Press coverage

~16 unique tv and online news hits; about half in Spanish;
still continuing to be referenced

Use by advocates in 1-on-1 meetings with legislators

Focus on children resonates with some unmoved by other
messages

ICE “Parental Interest Directive”

Recent policy change to: regularly identify and review cases
involving parents; ensure parents can participate in family
court proceedings; enable detained parents to regularly see
their children; train personnel on best practices for protecting
children and family unity

Stay of deportation for father who spoke at Capitol Hill briefing

Tell Wendy’s story about the republican rep.

Jonathan Heller, Co-Director
Human Impact Partners
510-452-9442 x100
jch@humanimpact.org
www.humanimpact.org

Thank you!!!