



EPA's Health Impact Assessment of Green Infrastructure in the Proctor Creek Communities of Atlanta, Georgia

National HIA Meeting
HIA and Environmental Regulation

Florence Fulk, MS, *U.S. EPA – Office of Research and Development*

Tami Thomas-Burton, MPH, *U.S. EPA – Region 4*

Lauren Adkins, MPH, *CSS-Dynamac*




Proctor Creek Boone Boulevard Green Street Project HIA

Decision: Implementation of a green infrastructure project along Joseph E. Boone Boulevard, NW (in concert with road diet project)

Decision-Makers: City of Atlanta, Georgia

Role of HIA: Evaluate potential positive and negative health impacts of the green street project design and inform stakeholder decisions

HIA Lead:  **EPA** United States Environmental Protection Agency
Region 4 – Office of Environmental Justice
Office of Research and Development

HIA Partners:    



What is Green Infrastructure?

- A non-traditional approach
- Purpose: To maintain healthy waters, protect the environment, promote health, and support sustainability
- Uses natural processes:
 - ❖ Vegetation
 - ❖ Soil Filtration
 - ❖ Shading
 - ❖ Water Conservation
 - ❖ Carbon Sequestration
 - ❖ Stormwater Management

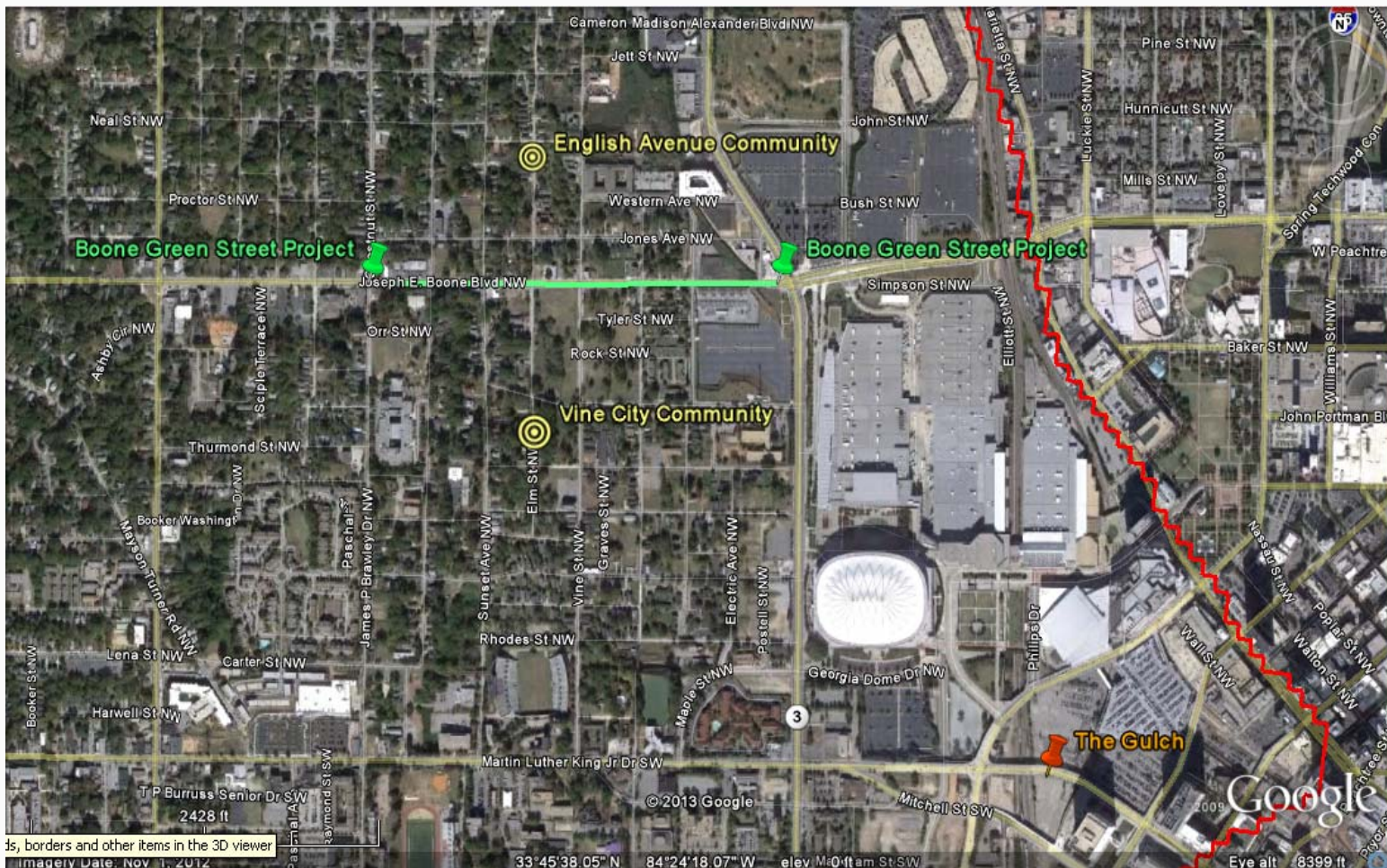


Planter Boxes



Urban Tree Canopy

Location of the Green Street Project





Defining the Community of Concern

This Community: Predominantly low income, minority population

Environmental Problems Facing This Community:

- Pervasive Flooding
- Impaired Water Quality
- Poverty
- Derelict Properties
- Aging Infrastructure

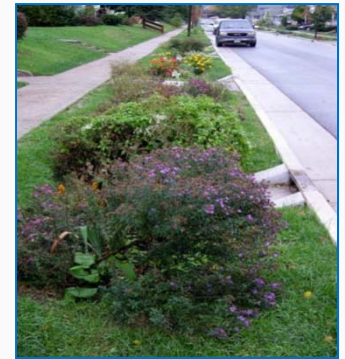




Why HIA in EPA?

Vision of EPA's Sustainable and Healthy Communities (SHC) Research Program: To inform and empower communities to include human health, economic, and environmental factors into decision-making processes.

- Provide a model of interagency collaboration at the local, state, and federal levels
- Gain experience in the application of HIAs in other environmental decision-making processes
- Create better understanding of direct and indirect public health benefits from implementing green infrastructure



Bioretention



Permeable
Pavement



Developing Partnerships and Engaging Stakeholders

- Leveraged the HUD-DOT-EPA Partnership for Healthy Communities
- Participation from multiple levels and agencies:
 - Federal (8)
 - University (7)
 - NGOs (3)
 - Community Orgs (10)
 - County (1)
 - City (1)
- Participation from multiple sectors:
 - Environmental Protection
 - Housing and Urban Development
 - Forest Service
 - Emergency Planning
 - Public Health
 - Transportation
 - Education